

School Newsletter

Thursday 19th September 2024



EDGARS CREEK
PRIMARY SCHOOL

Ph: 9407 7100 Web: <https://edgarscreekps.vic.edu.au>

Email: edgars.creek.ps@education.vic.gov.au

RESPECT RESPONSIBILITY COURAGE CURIOSITY



Term 3 at ECPS

What a great term we've had at ECPS! We've celebrated Book Week, had a lot of fun for Science Week, had a great turn out for Edgars Creeks Got Talent, participated in Athletics Days, celebrated and marked the 100 Days of Prep. Alongside these milestones, there has been fabulous learning, exciting excursions, and wonderful opportunities to connect with our community.

As we approach the holiday break, we hope everyone enjoys a restful two-week holiday. We look forward to seeing you all back on Monday, 7th October. Have a great holiday!

IMPORTANT DATES

Friday 20th September 
LAST DAY OF TERM
Casual Dress- Gold Coin
Donation
School will finish at 2:30pm

Monday 7th October
First Day of Term 4

Tuesday 15th October
Year 6 Graduation Photos

Friday 25th October
World Teachers Day

Monday 4th November
Student Free Day
No School on this Day

Tuesday 5th November
Melbourne Cup
No School on this Day

Acting Principal Term 4

An Acting Principal for Term 4 has been appointed by the Department of Education.

*We welcome **Teresa Marnik** to ECPS. She has worked as an Acting Principal locally and is looking forward to meeting all of the students, staff and families in Term 4.*



SCHOOL FINISH TIME FRIDAY

School will finish at 2:30pm tomorrow Friday 20th September. Please ensure you have made arrangements for school pick up.



Learning together for success.

Upcoming Road Works

Our school has been informed that there will be upcoming road works taking place on Montbeliard Road. The southbound lane will be shut between the same times from the 23rd September - 26th September.

School Enrolments

Our school is currently in the process of confirming 2025 enrolments. As a continually growing school, new students and families are joining us all the time. We encourage all families to process future enrolments as early as possible to support our school planning and organisation for the following year.

All enrolment enquiries can be made to the School Office on 9407 7100 or via the school email address edgars.creek.ps@education.vic.gov.au

Hats Term 4

As the warmer weather is approaching all students need an Edgars Creek Primary School hat which they must wear during all outside play breaks in term 4. Students without a hat will only be able to play in shaded spaces as of next week. Hats will be for sale at the School Office sometime next term.

Ramp Works - School Holidays

Over the upcoming school holidays, major works will be conducted on the main ramp leading to the Office/Learning Street to resurface the area. These works should be completed by the start of Term 4.

For the Big Childcare holiday program, access will be permanently moved to the new external gate (located by the Car Park gate).

There will also be works on the ramp located next to the Year 4 portables. This ramp will be removed and replaced with steps. Whilst the formed steps are scheduled to be completed by the start of Term 4, the handrails will not be installed until early Term 4. Therefore, there may be access restrictions/detours leading to the Year 4 portables and will be advised via Compass at the earliest opportunity.

We look forward to the completion of these works to keep our community safe.

Coming Soon

Over the last week our Year 5 students have voted on a design for 2025 Year 6 tops. In Term 4 these designs will be available to order. Please keep an eye on communications of when and how to order and cut off dates. These dates are important please make sure orders are in by the cutoff date, so your child doesn't miss out on ordering their 2025 Year 6 Top.



Learning together for success.

Mathletics

Congratulations to the following students in each Learning Community who have earned the highest amount of Mathletics points this term.

Prep ABC

Gold: Avyaan S
Silver: Mubasher K
Bronze: Annika C

Prep DEF

Gold: Manely A
Silver: Austin M
Bronze: Megan W

Year 1 ABC

Gold: Jackson N
Silver: Jamie G
Bronze: Ana S

Year 1 DEF

Gold: Seerat M
Silver: Ajoonee S
Bronze: Avik G

Year 2 ABC

Gold: Harish S
Silver: Haley L
Bronze: Gursanjh K

Year 2 DEF

Gold: Andrej S
Silver: Ali A
Bronze: Niroshan S

Year 3 ABCD

Gold: Eveleen K
Silver: Neer D
Bronze: Shayna M

Year 3 EFG

Gold: Shakshi S
Silver: Andrew W
Bronze: Radhika B

Year 4

Gold: Yaksh D
Silver: Reda A
Bronze: Shruthi S

Year 5

Gold: Safa A
Silver: Oustat B
Bronze: Jaslyn K

Year 6

Gold: Gurmeet S
Silver: Thiyahini S
Bronze: Aahana C

Term 3 Mathletics Awards

Celebrating Our Multicultural School Community

Everyone is welcome at Edgars Creek Primary School!



WHERE IN THE WORLD HAVE OUR FAMILIES COME FROM?

We are extremely proud of our multi-cultural community at ECPS! The families that are part of our school have come from many different countries.

Throughout 2024, we are acknowledging the geographical location of a new country each week during our school assembly. A dot is added to each country as we have acknowledged it.

Week 1 | 23rd – 27th September

Week 2 | 30th SEP – 4th October



MON 23 Everyone's Birthday \$75

Love birthdays but hate waiting for them? We've got you covered! Join us for Everyone's Birthday, where each child gets a special gift. Enjoy a day filled with fun, games, and treats, making it a celebration to remember for everyone!



MON 30 Kid's On Wheels \$75

Get ready for Kid's On Wheels! Bring your bikes and roll into a day of wheeling good fun. Learn how to maintain your bike and enjoy thrilling rides and games. It's a day packed with skills, excitement, and plenty of bike adventure!



TUE 24 Football Frenzy \$75

Join us for a day packed with exciting sports action, including AFL, rugby, soccer, and more. Whether you're kicking goals, scoring tries, or making epic passes, it's all about fun, teamwork, and thrilling games. Don't miss out on this sports-filled extravaganza!



TUE 01 BIG Show Day \$75 + \$75

Step right up for the most spectacular Show Day ever! Dive into a carnival extravaganza with exclusive access to thrilling rides, exciting games, and fantastic entertainment. Did we mention that everyone gets a show bag? Don't miss out on this spectacular highlight!



WED 25 Big Camp Out \$75

Experience the adventure of Big Camp Out! Come in your PJs, pitch tents, make snacks, and enjoy campfire stories. Connect with the outdoors for a day of fun, laughter, and unforgettable memories!



WED 02 Picnic In The Park \$75 + \$32.50

Pack your picnic basket! Enjoy a delightful day outdoors with tasty treats, fun slides, swings, and classic park games. It's the perfect chance to relax, connect, and have a blast with friends and family under the sun!



THUR 26 Werribee Zoo \$75 + \$50

On this day out you can see a whole range of animals on this open range adventure. You have the chance to go on a safari and get up close with some of the most incredible creatures Australia has to offer!



THUR 03 Balloons, Balls & Bubbles \$75

Step into a world of fun at Balloons, Balls & Bubbles! Enjoy a mix of cooking, physical activities, crafts, and science experiments. From bouncing balls to bubbling concoctions, it's a day of creativity, learning, and excitement for everyone!



X FRI 27 OFFLINE – No Care Provided

Big Childcare is offline today in observance of the public holiday. It's our time to recharge, and we hope you get the chance to do the same with your family. Enjoy the day!



FRI 04 Movies \$75 + \$42.50

Settle in the coms a poppin', the movies where the bus is stoppin'! The lights are dimmed, and the screen is set for a fun for all ages movie. Check with your centre manager to see what we'll be watching today!



Book Online

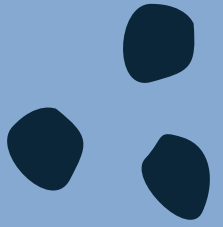
big HOLIDAY CARE

"WHERE EVERY HOLIDAY ADVENTURE BEGINS"

2024 SPRING HOLIDAY CARE



EDGARS CREEK
PRIMARY SCHOOL



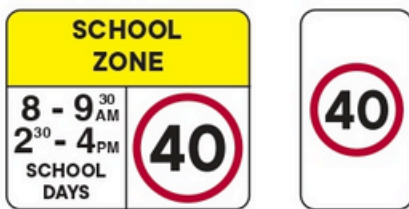
WHITTLESEA COMMUNITY NEWS



Parking and safety around schools

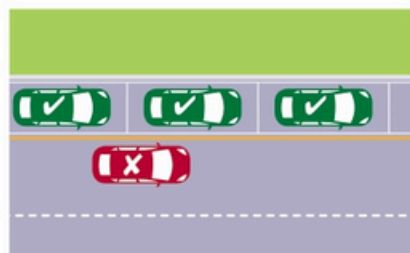


Speed



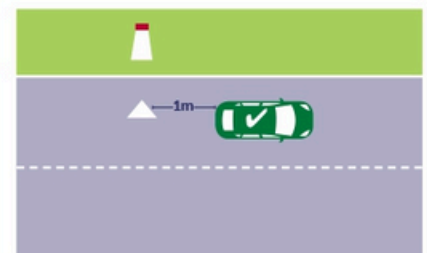
Look out for the reduced speed limit around schools and slow down to improve safety.

Yellow edge line



A driver must not stop on the side of the road marked with a yellow edge line.

Fire hydrants



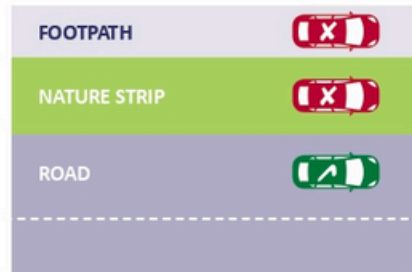
1 Metre clearance is required for fire hydrants, fire hydrant indicators or fire plug indicators.

School crossings



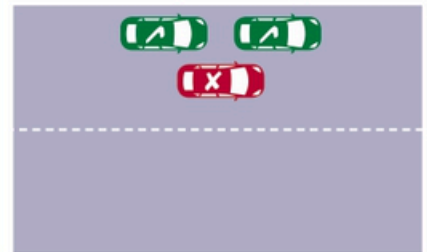
- Look out for flags and crossing supervisors.
- You must stop for anyone waiting to cross, or who has started crossing
- Please remain stopped until the crossing is clear.

No crossing on nature strips/footpaths



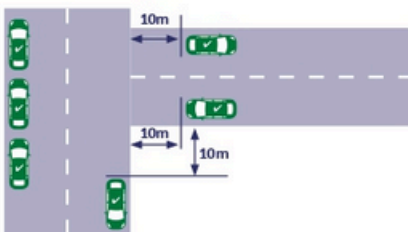
Parking is illegal on nature strips and footpaths.

Double parking



It is illegal to double park at anytime. This affects the flow of traffic.

Within 10 metres of an intersection



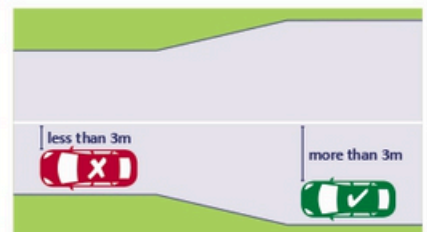
A driver must not stop with any part of their vehicle within 10 metres of an intersection unless signed otherwise.

Stopping across driveways



It is illegal to stop/park across a driveway unless you stay in the car and are there for no more than two minutes and move immediately if required to do so to allow entry or exit by the owner/occupier.

3 Metre gap from white line



At least 3 metres must be left between your vehicle and the centre dividing line to allow other vehicles to pass safely and not obstruct traffic.



Free telephone interpreter service
131 450

العربية 9679 9871
Ελληνικά 9679 9873
हिंदी 9679 9879

Italiano 9679 9874
Македонски 9679 9875
简体中文 9679 9857

ਪੰਜਾਬੀ 9679 9879
தமிழ் 9679 9879
Türkçe 9679 9877

Tiếng Việt 9679 9878
Other 9679 9879



City of Whittlesea

Parking at schools can be challenging due to limited spaces and heavy traffic, but doing it correctly can save lives.

Children are unpredictable and often move quickly, so as adults, we need to ensure their safety. By parking correctly we can do that.



Follow designated parking areas

Always park in designated areas and follow the school's parking regulations.



Drop-off and pick-up zones

Use designated drop-off and pick-up zones if available. These areas are designed for quick stops and minimise the time children spend in traffic areas.



Avoid double parking

Double parking can obstruct visibility and create hazards. Park only in designated spaces to allow for smooth traffic flow and prevent accidents.



Mind crosswalks and pedestrian paths

Avoid parking in or near crosswalks and pedestrian paths. Ensure that children have a clear path to walk safely to and from school without having to navigate through parked cars. It is illegal to park within 20m before a crossing and within 10m after a crossing.



Stay within marked lines

When parking, make sure to stay within the marked lines to maximize space efficiency and prevent congestion. This also ensures that emergency vehicles can pass through easily if needed.



Turn off engines

If you're waiting in your car, especially in drop-off or pick-up areas, turn off your engine. This reduces air pollution and creates a safer environment for children.



Watch for school zone signs

Obey speed limits and watch for school zone signs. These areas typically have reduced speed limits during certain hours to enhance safety.



Be mindful of blind spots

Before pulling into or out of a parking space, be mindful of blind spots. Check mirrors and surroundings to ensure no children are in the vicinity.



Practice patience

Traffic around schools can be hectic during drop-off and pick-up times. Practice patience, follow traffic rules, and be courteous to other drivers to create a safer environment for everyone.



Encourage walking or carpooling

If possible, encourage walking or carpooling to reduce the number of vehicles around the school. This can alleviate traffic congestion and contribute to a safer environment.

By following these guidelines, adults can contribute to creating a safer and more organised parking environment around schools, ultimately ensuring the well-being of children.



START THEIR BASKETBALL JOURNEY TODAY

hit the **HOOPS**



REGISTER NOW

For further information please email info@wcba.org.au

TERM 3 – 2024

MILL PARK STADIUM

WEDNESDAYS
4.00pm – 5.00pm

- 31 July 2024
- 7 August 2024
- 14 August 2024
- 21 August 2024
- 28 August 2024
- 4 September 2024
- 11 September 2024
- 18 September 2024

EDGARS CREEK PS

TUESDAYS
3.30pm – 4.30pm

- 30 July 2024
- 6 August 2024
- 13 August 2024
- 20 August 2024
- 27 August 2024
- 3 September 2024
- 10 September 2024
- 17 September 2024

COST:

\$145 NEW PARTICIPANTS
\$100 RETURNING PARTICIPANTS



NEW PARTICIPANT PACK INCLUDES A PERSONALISED SINGLET AND BASKETBALL



WHITTLESEA
PACERS
BASKETBALL

HOME RUN HEROES

SCHOOL HOLIDAY

T-BALL & SOFTBALL PROGRAM



Northern Softball
@ Mill Park

WHO?

JUNIORS 5-12 YRS
All ability levels

COST

\$60

**FUN & INCLUSIVE
SKILL BASED ACTIVITIES AND MODIFIED
GAMES OF T-BALL & SOFTBALL
DELIVERED BY QUALIFIED COACHES
PATHWAY TO JUNIOR SOFTBALL**

6 SESSIONS DURING SCHOOL HOLIDAYS

WEEK ONE MON 23 SEP - WED 25 SEP & WEEK TWO MON 30 - WED 2 OCT 10AM -12PM

VENUE: NORTHERN DISTRICT SOFTBALL
ASSOCIATION, MILL PARK RECREATION
RESERVE, 41 MORANG DRIVE, MILL PARK

**REGISTER
HERE:**



**HOME RUN
HEROES**

northernsoftballvic@gmail.com
www.revolutionise.com.au/northerndistrictsa/



Certificate III in School Based Education Support CHC30221

Education Support is a flexible and rewarding career where you can work in the classroom to support students with additional needs.

Prace delivers an industry driven and dynamic learning experience to ensure you are job-ready with the skills employers are looking for. With the guidance of expert teachers in a friendly and supportive classroom, you will develop the skills to:

- Support students with additional needs
- Support literacy and numeracy skills
- Contribute to planning educational programs
- Support the health, wellbeing and safety of students

You will participate in excursions, workshops and gain insights from industry guest speakers.

Meet the Trainer

Get answers to all your course questions at the *Introduction to VET Education Support* workshop starting 18 Oct 2024.

Pathways

Graduates are in demand and work in a range of educational settings, including primary and secondary schools and schools for children with additional needs. Graduates work as education assistants, teacher's aides and support workers.

Entry requirements

Aged 18 years and over. Moderate computer, email and internet skills. Plus digital technology access. English LLN skills at an industry entry standard.

How to enrol

Call 9462 6077 to arrange a pre-enrolment interview.



Location

Prace - Merrilands
Community Centre
35 Sturdee Street,
Reservoir

Dates and duration TBC

15 Nov 2024 - 1 Aug 2025

26 Sessions

2 Workshops

100-hour placement
(Includes Tues 17 Dec 2024 &
Tues 25 March 2025 and 8 week
summer holiday break from
18 Dec 2024 - 6 Feb 2025)

Days and times

Fridays

9.15am - 3.15pm

(No classes on public or school holidays)

Study Mode

Face-to-face plus self-directed offsite tasks and research, remote teacher support, practical placement and industry assessment/workshops

Fees

Gov. subsidised:

Concession \$90

Full \$450

Non-subsidised \$5850

^Special consideration may apply
Plus \$10 Service & Amenities fee

Course commencement is subject to variation, sufficient enrolments and eligibility requirements. Prace encourages people with disabilities to participate in our programs and activities. Training is delivered with Victorian and Commonwealth Government funding.



Prace - Main Office

Merrilands Community Centre - 35 Sturdee Street, Reservoir

Phone 9462 6077 | office@prace.vic.edu.au | www.prace.vic.edu.au

(Prace Inc. No. A0032713Z TOID 4036 ABN 93 736 262 050)