

School Newsletter

Thursday 8th February 2024



EDGARS CREEK
PRIMARY SCHOOL



Ph: 9407 7100 Web: <https://edgarscreekps.vic.edu.au>

Email: edgars.creek.ps@education.vic.gov.au

RESPECT RESPONSIBILITY COURAGE CURIOSITY

IMPORTANT NOTICE: 2024 CONSENT & PARENT CONTRIBUTION

You need to give digital consent for your children to be able to participate in the programs listed below and can make your 2024 Parent Payment Contributions through the Compass Payment Centre.

It is extremely important that you identify your consent for the following through the Compass Payment Centre:

- Local Excursion Agreement (tick box)
- Headlice Inspections Agreement (tick box)
- Digital Technologies and BYOD Program Agreement (tick box)
- Photography, Filming and Recording Consent (this requires you to type yes or no)

Please contact the office if you need any assistance on 9407 7100.

IMPORTANT DATES

Wednesday 7th, 14th, 21st, 28th February
Prep Interviews
No school for Prep students on these days.

Tuesday March 5th
Meet The Teacher

Wednesday March 6th
Meet The Teacher

Monday March 11th
Labour Day Holiday
No School on this Day

Wednesday 13th March
Naplan

Thursday 21st March
Harmony Day

Friday April 26th
Student Free Day
No Students at School on this Day

Every Friday from 9th February-22nd March
Year 5/6 Interschool Sports

Mothers Day Stall

Thank you to all the parents who have offered their time to help with the Mothers' Day Stall we are still needing the support of some more families. If you are interested in volunteering your time to help please contact Jess at the office on 94077100

Newsletter Challenge
How many **Drink Bottles** can you find? Write your answer and put it in the challenge box in the office. Winners drawn at assembly tomorrow.

Learning together for success.

Facebook



Don't forget to jump over to our Facebook page to check out all the fun activities that will be going on throughout 2024. On Facebook you will find picture of excursions and activities the student are doing and any updates we are wanting parents to see. Please note that any important information will be sent out on Compass. Click on the link to follow our Facebook page.

[facebook link](#)

COMPASS



It is very important that you activate **COMPASS** to access the school communication.

Compass is the main form of communication between the school and families. Many reminders and other information are sent using this system. Please see the School Office if you are having any difficulties.



Hot Days

We are committed to the wellbeing of our students and staff by requiring them to wear a hat when outdoors. Students **MUST** wear an Edgars Creek Primary School Hat available from the office or PSW - South Morang. If your child does not have a school hat, please purchase one ASAP and ensure that it has their name written clearly inside the hat. We will be enforcing a **NO HAT, NO PLAY** in the sun policy, which requires students without a hat to stay in an identified shaded area of the yard. We also have a heat policy that once the temperature exceeds 36 degrees, we will keep the students inside and run an Inclement Weather Timetable. This means students do not go outside for the play breaks, instead they do a variety of indoor games and activities which are made available to them. Likewise, if it is raining we have students remain inside.

Term 1 Interschool Sport - Years 5 & 6

Year 5 and 6 students selected to represent our school in cricket, soccer and basketball will commence their weekly Interschool Sport competition this Friday 9th February. All students not named in these squads will participate in a weekly intraschool sport competition at ECPS.

This week the Interschool Sport fixture is:

Division A Squads - Home vs Al Siraat College

(Soccer will be played on the Edgars Creek Secondary College soccer pitch)

(Cricket will be played on the Edgars Creek Secondary College oval)

Division B Squads - Away vs Harvest Home Primary School



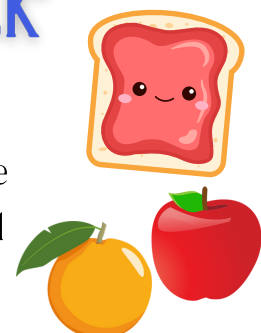
Canteen

Our canteen is open!!! We are continuing to sell sugar free Zooper Doopers and Popcorn this year. These will be sold daily for Years 1-6 Sales for Preps will begin in March. Zooper Doopers and Popcorn are sold for \$1 each



BREAKFAST CLUB IS BACK

Breakfast Club will return every **MONDAY, TUESDAY, THURSDAY & FRIDAY** from the **CANTEEN** at 8:20AM Enter from Basketball court Gate.



Learning together for success.

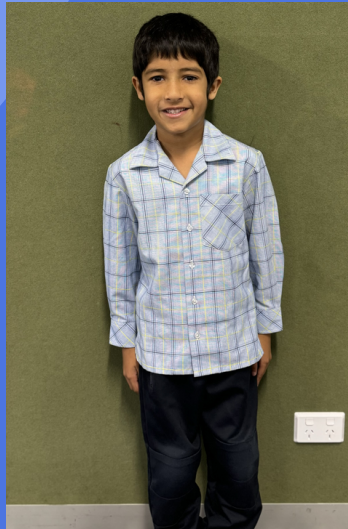
ECPS SCHOOL UNIFORM REQUIREMENTS

Summer/Winter Uniform Options

To be worn 3 days each week.



Short sleeve shirt & navy shorts or pants.



Long sleeve shirt & navy blue pants.



Summer dress & jumper or jacket.



School jumper or jacket. Navy blue pants or shorts.

Sport Uniform

To be worn 2 days each week.

(The day allocated for your child's home group and every Friday)



Pale blue polo for students in Years Prep to Year 5.
Navy blue shorts or pants.
Year 6 students have navy blue Polos.

Hijab, patka or other headwear



If your child wears a hijab, patka or other headwear, it is to be worn in navy blue, light blue or white only.

Lunch Mums



Lunch Mums are an external business that provides lunch orders to the local Schools. They pride themselves in providing wholesome and tasty lunches to the school community. Their aspirations are not only to offer healthy lunches and treats to children, but to also offer a simple and effective ordering solution to help busy parents, without the worry or fuss.

Lunch orders will be available Tuesday's and Thursday's. Parents/Students will be able to place orders via an online App "[My School Connect](#)". Please refer to the instructions below on how to set up an account and register your child/children.

Orders must be in by Tuesday 8.00am and Thursday 8.00am.

ECPS & Lunch Mums look forward to working with the school community in providing school lunches for your children

Please call the office if you require assistance to set up the app.



ORDER
ON
THE APP

MY SCHOOL CONNECT
Making online easy!

NEW ONLINE PORTAL

STEP 1. Visit My School Connect
Visit <http://www.myschoolconnect.com.au> and register as a parent.

STEP 2. Setup a child
Upon first login, setup your child/children.

STEP 3. Enter student details
Don't forget to add in all essential fields; name, school, class and any allergy information.

STEP 4. Allow your child to order for themselves
Setting 'yes' here will allow your child to login online and order.

PRO-TIP!
This is a great way to teach your child to manage their spending and choose healthy food. Remember to always supervise.

STEP 5. Set a daily spend limit
You can either enter a '\$dollar amount' or select 'unlimited'. The daily spend will only apply to your child's account.

STEP 7. Add funds to your account
Visit the 'Top up and financial history' section to add funds into your account by following the following steps:

Top up	Auto top up
a) Select payment type: Bank Account or Credit Card	a) Select payment type: Bank Account or Credit Card
b) Select a \$dollar amount	b) Add top up parameters: minimum balance & auto top up amount
c) Enter payment details	

NAPLAN 2024

NAPLAN will commence in Week 7 for Years 3 & 5. Tests will go over four days if you have any questions please speak to your child's homegroup teacher. See below for more information.

NAPLAN Information for parents and carers

2024

Why do students do NAPLAN?

The National Assessment Program – Literacy and Numeracy (NAPLAN) is a literacy and numeracy assessment that students in Years 3, 5, 7 and 9 sit each year. It is the only national assessment all Australian students have the opportunity to undertake.

As students progress through their school years, it is important to check how well they are learning the essential skills of reading, writing and numeracy.

NAPLAN assesses the literacy and numeracy skills that students are learning through the school curriculum and allows parents/carers to see how their child is progressing against national proficiency standards.

NAPLAN is just one aspect of a school's assessment and reporting process. It does not replace ongoing assessments made by teachers about student performance, but it can provide teachers with additional information about students' educational progress.

NAPLAN also provides schools, education authorities and governments with information about how education programs are working and whether young Australians are achieving important educational outcomes in literacy and numeracy.

Your child will do the NAPLAN tests online

Online NAPLAN tests are designed to provide precise results and are engaging for students. The tests are tailored (or adaptive) which means that each test presents questions that may be more or less difficult depending on a student's responses. This helps students remain engaged with the assessment.

Tailored testing allows a wider range of student abilities to be assessed and measures student achievement more precisely. A student's overall NAPLAN result is based on both the number and complexity of questions they answer correctly. Your child should not be concerned if they find questions challenging; they may be taking a more complex test pathway.

All Year 3 students will continue to complete the writing assessment on paper.

What does NAPLAN assess?

NAPLAN assesses literacy and numeracy skills that students are learning through their regular school curriculum.

Students sit assessments in writing, reading, conventions of language (spelling, grammar and punctuation) and numeracy. The questions assess content linked to the Australian Curriculum: English and Mathematics.

All government and non-government education authorities contribute to the development of NAPLAN test materials.

To find out more about NAPLAN, visit nap.edu.au.

Participation in NAPLAN

NAPLAN is for all Year 3, 5, 7 and 9 students. ACARA supports inclusive testing, so all students have the opportunity to participate in the national assessment program.

Adjustments are available for students with disability who have diverse functional abilities and needs.

Schools should work with parents/carers and students to identify, on a case-by-case basis, reasonable adjustments required for individual students with disability to access NAPLAN. Adjustments should reflect the support normally provided for classroom assessments.

To help inform these decisions, you may consult the [NAPLAN public demonstration site](#), the [Guide for schools to assist students with disability to access NAPLAN](#), and our [series of videos](#) where parents/carers, teachers and students share their experiences in using NAPLAN adjustments.

In exceptional circumstances, a student with a disability that severely limits their capacity to participate in the assessment, or a student who has recently arrived in Australia and has a non-English speaking background, may be granted a formal exemption.

Your school principal and your local test administration authority can give you more information on adjustments for students with disability or the process required to gain a formal exemption.

What can I do to support my child?

Students are not expected to study for NAPLAN. You can support your child by reassuring them that NAPLAN is a part of their school program and reminding them to simply do their best. Some explanation of NAPLAN is useful to help students understand and be comfortable with the format of the tests; however, it is not necessary for parents/carers to do this. Teachers will ensure students are familiar with the types of questions in the tests and will provide appropriate support and guidance.

ACARA does not recommend excessive preparation for NAPLAN or the use of services by coaching providers.

See the types of questions and tools available in the online NAPLAN assessments at [NAP - Public demonstration site](#).

How is my child's performance reported?

From 2023, NAPLAN results are reported against proficiency standards. There is a standard for each assessment area at each year level. Proficiency standards provide clear information on student achievement. They are set at a challenging but reasonable level expected for the child at the time of NAPLAN testing, based mainly on what has been taught in previous years of schooling. Student achievement is shown against 4 levels of proficiency: Exceeding, Strong, Developing and Needs additional support.

A NAPLAN individual student report will be provided by your child's school later in the year. If you do not receive a report, you should contact your child's school.

What if my child is absent from school on NAPLAN test days?

Where possible, schools may arrange for individual students who are absent at the time of testing to complete missed tests at another time during the school's test schedule.

How are NAPLAN results used?

- Students and parents/carers use individual results to discuss progress with teachers.
- Teachers use results to help identify students who need greater challenges or extra support.
- Schools use results to identify strengths and areas of need to improve teaching programs, and to set goals in literacy and numeracy.
- School systems use results to review the effectiveness of programs and support offered to schools.
- The community can see information about the performance of schools over time at myschool.edu.au.

Where can I get more information?

For more information about NAPLAN:

- contact your child's school
- contact your local test administration authority at nap.edu.au/TAA
- visit nap.edu.au

To learn how ACARA manages personal information for NAPLAN, visit nap.edu.au/naplan/privacy.

NAPLAN timetable

The NAPLAN test window is 9 days. This is to accommodate schools that may not have the capacity to complete the tests in a shorter time frame.

The NAPLAN test window starts on Wednesday 13 March 2024 and finishes on Monday 25 March 2024. Schools will schedule the tests as soon as possible within the testing window, prioritising the first week.

Test	Scheduling requirements	Duration	Test description
Writing	<ul style="list-style-type: none">• Year 3 students do the writing test on paper and on day 1 only.• Years 5, 7 and 9 writing must start on day 1 (schools must prioritise completion of writing across days 1 and 2, with day 2 only used where there are technical/logistical limitations).	Year 3: 40 min Year 5: 42 min Year 7: 42 min Year 9: 42 min	Students are provided with an idea or topic called a "writing stimulus" or "prompt" and asked to write a response in a particular genre (narrative or persuasive writing).
Reading	<ul style="list-style-type: none">• To be completed after the writing test	Year 3: 45 min Year 5: 50 min Year 7: 65 min Year 9: 65 min	Students read a range of informative, imaginative and persuasive texts, and then answer related questions.
Conventions of language	<ul style="list-style-type: none">• To be completed after the reading test	Year 3: 45 min Year 5: 45 min Year 7: 45 min Year 9: 45 min	Students are assessed on spelling, grammar and punctuation.
Numeracy	<ul style="list-style-type: none">• To be completed after the conventions of language test	Year 3: 45 min Year 5: 50 min Year 7: 65 min Year 9: 65 min	Students are assessed on number and algebra, measurement and geometry, and statistics and probability.

MEET THE WELLEBEING TEAM



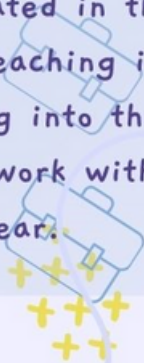
Hi, my name is Beck and I am one of the Assistant Principals at ECPS. I am so excited to meet you! I love spending time with my family especially my fur baby Layla. I enjoy cooking and shopping.



Hello ECPS families. My name is Sara Johns and I have been very fortunate to be with our fabulous school since we opened in 2021. I am the Wellbeing Leading Teacher and am passionate about supporting children socially, emotionally and academically. I enjoy baking sweets and spending time with my family. I look forward to working with our school community in 2024.



Hi my name is Ruby I am the Mental Health and Wellbeing Leader (MHWL) - previously called the MHWC. My office is located in the Prep building, sharing a space with Sara. I have been teaching in the early years since our school opened and now stepping into the mental health and wellbeing role. She will continue to work with and support the families of ECPS throughout the year.



Hello, my name is Vanessa, and I am in Education Support and the Wellbeing aide for ECPS, you may also find me at Breakfast Club. When I am not at school, I am a busy mum of three (1 girl & 2 boys). I spend a lot of my time watching my boys play soccer which I love, and I also love spending time with my family & friends and heading to the beach where possible. Look forward to meeting new and seeing old faces in 2024!





EDGARS CREEK
PRIMARY SCHOOL

MEET THE ADMIN TEAM FOR 2024

BUSINESS MANAGER- GRACE



Hi everyone! I am Grace, Business Manager for Edgars Creek Primary School. When I am not at work I enjoy spending time with my family, my cute dogs and living life down at the beach. It has been a very exciting, educational and interesting journey so far as the Business Manager responsible for opening our new school in 2021 and am very much looking forward to continuing this journey together with all the Edgars Creek Primary School Community.

ASSISTANT BUISNESS MANAGER- LEAH



Hi, my name is Leah. I' m mum to two girls. I love to travel, spend time with family and friends and surprisingly, I love to garden. I' ve been working at ECPS for 2 years now. It has been so lovely to meet and work with the whole school community during this time. A warm welcome to all the new families and staff this year, I' m looking forward to meeting you all in 2024.

COMMUNICATIONS OFFICE- JESS



Hi, My name is Jess I work in the office, I love spending time with my kids doing fun activities and sports. Looking forward to spending another great year with you all at ECPS in 2024 😊

ADIMSTRATIONS OFFICER- NINA



Hi, my name is Nina, I love working at ECPS and seeing everyone' s happy, smiling faces every morning. When I' m not at ECPS, I love spending time with my family and going on walks in the park.

ENROLMENTS OFFICE- ALESSIA



Hi, my name is Alessia. I have been working for the education department, in various roles, for 8 years. I am extremely excited to be working in the School Office, as part of the Administration Team here at Edgars Creek Primary School. I look forward to meeting you all and being part of the Edgars Creek Primary School Community.

FIRST ADIE OFFICER-MONICA



Hi my name is Monica and I am the First Aid officer, I have been working at ECPS for just over 6 months now. I have made amazing friendships with staff and students along the way and each day it grows! I feel very lucky to be a part of this community and look forward to coming into work seeing joyful faces everyday.



ACADEMIC ACHIEVEMENT EXCELLENCE AND EFFORT

Home Group	Name	Award given...
6A	Kirat	For making a wonderful start to term 1! Your bubbly personality has put smiles on the faces of all your peers. Keep it up, Kirat!
6B	Rabab	For having a fantastic start to the year and demonstrating the school value of Courage by participating in discussions and sharing ideas with your peers and teachers! You're a star!
6C	Sohie	For beginning the school year with a positive attitude and a smile. You have demonstrated the school value of Courage by embracing your new homegroup and involving yourself in class discussions. Keep being your awesome self!
6D	Carlos	For demonstrating exceptional bouncing-back skills!
5A	Ghaith	For demonstrating the school value of Courage and Curiosity during his first week at Edgars Creek Primary School. Well done, keep up the amazing work, Ghaith!
5B	Louay	For showing the school values of Responsibility by trying his best in all learning areas. We can see you're trying your best, keep up the amazing work!
5C	Ridha	For consistently demonstrating the school values, showing courage by sharing your ideas and maintaining a positive attitude. You have had an amazing start to Year 5, keep up the fantastic work!
5D	Zainb	For showing the school values of Respect, Responsibility and Courage by trying your best. Keep up the great attitude and continue doing your best!
4A	Marya	For settling into ECPS so wonderfully and consistently showing all of our school values. Keep up the excellent effort, Marya!
4B	Dilshaan	For demonstrating the school value of Courage by sharing your ideas with your peers and teachers. Keep up the wonderful job, Dilshaan!
4C	Alex	For showing the school values Responsibility and trying hard in all learning areas. We can see you are putting in effort in completing your learning! Well Done!
4D	Saisa	For showing the school value of Courage when starting as a new student at ECPS. Well done on showing a positive attitude to learning and making new friends!
3A	Khadija	For showing the school value of Responsibility when settling into Year 3. You have been a great role model for other students and have demonstrated all our home group expectations.
3B	Leon	For being a helpful classmate towards his peers and teacher. Your kindness brightens up the learning community, Leon!
3C	Sifti	For consistently showing the school values while settling into 3C. You have been a great role model and have demonstrated all our home group expectations. Well done, Sifti!
3D	Amara	For showing the school value of Respect by always using her manners towards her peers and teachers.
3E	Nerthus	For showing the school value of Courage since joining ECPS. You have displayed immense bravery by making new friends and settling in to a new environment. Well done, Nerthus!
3F	Josiah	For showing the school value of Responsibility by keeping our learning space tidy and organised for everyone. Thank you, Josiah. 3F appreciates your help.
3G	Harliv	For embracing your new start at ECPS. Well done for having a positive attitude towards your learning and making new friends. Keep up the good work, Harliv!
2A	Aimy	For showing the school value of Courage when settling into her new school with confidence and persistence. Keep up the positive attitude. Well done!
2B	Rion	For displaying the school value of Responsibility by consistently doing the right thing and encouraging others to be their best. Well done on an amazing start to the year, Rion!
2C	Naomi	For showing the school value of Respect by listening attentively in class. Amazing effort, Naomi!
2D	Yuvisha	For demonstrating the school value of Responsibility when helping her teachers and peers. You are showing great leadership skills in the classroom, Yuvisha. Keep it up!
2E	Ariana	For settling into the school year with a positive attitude. Well done Ariana on a fantastic start to Year 2. Keep up the amazing effort!
2F	Layaan	For always demonstrating the school value of Respect in the classroom and always following instructions! Keep up the good work Layaan!



ACADEMIC ACHIEVEMENT EXCELLENCE AND EFFORT

Home Group	Name	Award given...
1A	Aayan	For showing the school value of Courage when returning to school to start Year 1. You have settled in beautifully Aayan and demonstrate enthusiasm towards your learning and respect towards your peers daily. You're a superstar!
1B	Celine	For showing the school values of Respect and Responsibility by following school expectations and encouraging others to do the right thing. You have shown kindness to your peers and made new students to our school feel so welcome and included. I am so proud of you Celine, you are a superstar!
1C	Shreya	For showing the school value of Respect and Responsibility. Shreya, I love how you push the chairs in for everyone and pack up after yourself. I also admire how you always raise your hands before you speak! Keep up the good work!
1D	Elizabeth	For demonstrating the school value of Courage when beginning Year 1 at Edgars Creek Primary School. You have settled in beautifully and continuously show respect toward your teachers and peers. You are a superstar, Elizabeth!
1E	Hasan	For coming to school ready to learn and consistently displaying the school value of Curiosity. Well done Hasan on showing enthusiasm in your learning. You are a star!
1F	Luke	For being consistently respectful in class showing whole body listening and always raising your hand. I admire the courage you have shown when trying new activities and when asking questions. What a wonderful start to the year, keep up the good work!
PA	Anika	For showing courage by making new friends and being respectful to all her new teachers. We are so proud superstar!
PB	Adam	For being such a considerate and respectful member of the Prep Learning Community. Your kindness and willingness to help others has been amazing to see. Well done, Adam!
PC	Aaron K	For showing all the school values. You have been very kind and caring towards others. Well done!
PD	Blake R	For showing the school value Courage when trying new things. Blake, you should be so proud of yourself! Keep up the great work superstar!
PE	Tegh	For showing the school values of Courage and Curiosity during the first week of Prep. You have done a fantastic job at asking questions and making new friends. Keep up the amazing work!
PF	Gurvik	For settling in extremely well to Prep. You have shown all of the school values and have been very kind and caring towards others. Well done, Gurvik. Keep it up superstar!
Digital Technologies – Binny	Dilshan	For demonstrating the school value of Respect in Digital Technologies by showing whole body listening and always raising your hand to answer. Well done, Dilshaan!
STEM - Sue	3C- Ivy	For showing the school values of Respect and Responsibility in STEM. Well done for collaborating with your team in a group activity. Keep up the amazing work!
Science – Taylah	Samuel- 6B	For showing all the school values of in Science this week. Great work, Samuel! Keep it up!
Visual Arts - Kristy	Rion 2B	For showing all the school values in Visual Arts this week. Well done, Rion! Fantastic start to the school year!
Performing Arts - Anita	Eray 5	For showing the school values of Respect and Responsibility by following instructions and trying your best during Performing Arts. Your chalk 'Music' sign was fantastic! Keep up the great work!
Spanish- Yooky	Jason - 2c	For showing all the school values by speaking Spanish and following instructions in Spanish this week. Muy bien, Jason!
PE – David	Havish-5c	For showing our value of respect by working cooperatively with teachers and students.
Education Support- Vanessa	Larin	For showing the school value of Responsibility and being helpful and caring towards your classmates, teachers and support staff. Well done Larin!
Tutor Program - Todd	Jafar	For demonstrating the school value of Responsibility by positive choices for his learning. Well done, Jafar. Keep up the great work!



Welcoming Wellbeing

Canine Comprehension

Meet George! George will be joining ECPS once a week with his owner Judy. Judy is a passionate educator who loves making learning fun and supporting every child to reach their full potential. George is a Spoodle, who loves working with students and teaching them the importance of caring for others. He also loves supporting students with their own individual emotional, learning and development journeys. George's zest for life is contagious! Canine Comprehension will run with Ruby and a group of students on Friday afternoons.



If you would like additional information about the program, please visit: <https://www.caninecomprehension.com.au>

CSEF 2024

2024 CSEF applications are now open. We encourage all families to read the attached information regarding their eligibility for additional funding under the Camps, Sports and Excursion Fund (CSEF). If you have any questions regarding this, please contact our School Office or head to the website below:

<https://www2.education.vic.gov.au/pal/camps-sports-and-excursions-fund/guidance/submitting-application>



Camps, Sports and Excursions fund eligibility

Below are the criteria used to determine a student's eligibility for the Camps, Sports and Excursions Fund (CSEF).

Criteria 1 – Eligibility

To be eligible* for the fund, a mature minor of sixteen years of age or over, a parent or legal guardian of a student attending a registered Government or non-government Victorian primary or secondary school must:

- on the first day of Term one, or;
 - on the first day of Term two.
- a) Be an eligible beneficiary within the meaning of the State Concessions Act 2004, that is, be a holder of Veterans Affairs Gold Card or be an eligible Centrelink Health Care Card (HCC) or Pensioner Concession Card (PCC) holder, OR
 - b) Be a temporary foster parent, and;
 - c) Submit an application to the school by the due date.

* A special consideration eligibility category also exists. For more information, see: [Camps, Sports and Excursions Fund \(CSEF\): Eligibility | education.vic.gov.au](#)

Mature minors or parents who receive a Carer Allowance on behalf of a child, or any other benefit or allowance not income tested by Centrelink, are not eligible for the CSEF unless they also comply with one of (a) or (b) above.

Criteria 2 - Be of school age and attend school in Victoria

School is compulsory for all Victorian children aged between six and seventeen years of age inclusive.

For the purposes of CSEF, students may be eligible for assistance if they attend a Victorian registered primary or secondary school. Typically, these students are aged between five and eighteen years inclusive.

CSEF is not payable to students attending pre-school, kindergarten, home schooling, or TAFE.

Eligibility Date

For concession card holders, CSEF eligibility will be subject to the parent/legal guardian's concession card being successfully validated with Centrelink on 29 January 2024 and/or 15 April 2024.

Payment amounts

CSEF payment amount

The CSEF is an annual payment to the school to be used towards camps, sports and/or excursion expenses for the benefit of the eligible student.

- Primary school student rate: \$150.00 per year.
- Secondary school student rate: \$250.00 per year.

The CSEF is paid directly the school and will be allocated by the school towards camps, sports and/or excursion costs for your child.

For ungraded students, the rate payable is determined by the student's date of birth. For more information, see: [Camps, Sports and Excursions Fund \(CSEF\): Payment amounts | education.vic.gov.au](#)

Foundation and Year 7 government school students who are CSEF recipients are also eligible for a uniform voucher. Schools are required to make applications on behalf of parents, so please register your interest at the school.

How to complete the application form

NOTE: ALL SECTIONS MUST BE COMPLETED BY PARENT/LEGAL GUARDIAN

1. Complete the PARENT/LEGAL GUARDIAN DETAILS section.
Make sure that the Surname, First Name, and Customer Reference Number (CRN) details match those on your concession card. You will also need to provide your concession card to the school.
If you are claiming as a Foster Parent or a Veteran Affairs Pensioner, you will need to provide a copy of documentation confirming your status as a temporary Foster Parent or provide your Veterans Affairs Pensioner Gold card to the school.
2. Complete the STUDENT/S DETAILS section for students at this school.
3. Sign and date the form and return it to the school office as soon as possible. The CSEF program for 2024 closes at the end of term two 2024.

CSEF payments cannot be claimed retrospectively for prior years.

Queries relating to CSEF eligibility and payments should be directed to the school.

Camps, Sports and Excursions Fund APPLICATION Form

Edgars Creek Primary School

015310

School Name

School REF ID

Parent/legal guardian details

Surname _____

First name _____

Address _____

Town/suburb _____ State _____ Postcode _____

Contact number _____

Centrelink pensioner concession OR Health care card number (CRN)

- - - OR

Foster parent* OR Veterans affairs pensioner (Gold Card)**

*Foster Parents must provide a copy of the temporary care order letter from the Victorian Department of Families, Fairness and Housing (DFFH).

**Applicants must provide a copy of the Veteran Affairs Gold card.

Student details

Child's surname	Child's first name	Student ID	Date of birth (dd/mm/yyyy)	Year level

I authorise the Victorian Department of Education (DE) to use Centrelink Confirmation eServices to perform an enquiry about my Centrelink customer details and concession card status to enable the business to determine if I qualify for a concession, rebate or service. I also authorise the Victorian Department of Families, Fairness and Housing (DFFH) to provide the results of any enquiry to DE regarding temporary care orders.

I understand that:

- DFFH or Centrelink will use information I have provided to DE to confirm my eligibility for the Camps, Sports and Excursions Fund and will disclose to DE personal information including my name, address, payment and concession card type and status.
- This consent, once signed, remains valid while my child is enrolled at a registered Victorian school unless I withdraw it by contacting the school.
- I can obtain proof of my circumstances/details from DFFH and provide it to my child's school so that my eligibility for the Camps, Sports and Excursions Fund can be determined.
- If I withdraw my consent or do not alternatively provide proof of my circumstances/details, I may not be eligible for the Camps, Sports and Excursions Fund provided by DE.
- Information regarding my eligibility for the Camps, Sports and Excursions Fund may be disclosed to DFFH and/or State Schools Relief for the purpose of evaluating concession card services or confirming eligibility for assistance.

You can request access to the personal information that we hold about you, and to request that any errors be corrected, by contacting your child's school.

Signature of applicant _____

Date ____ / ____ / ____



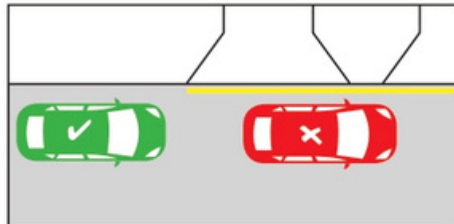
PARKING AND SAFETY AROUND SCHOOLS

Speed



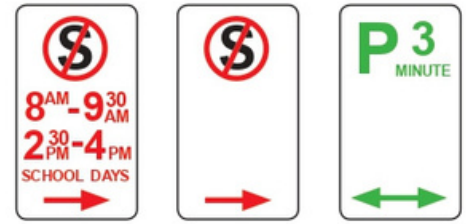
Look out for the reduced speed limit around schools and slow down to improve safety.

Yellow edge line



A driver must not stop on the side of a road marked with a yellow edge line.

Parking/Stopping signage



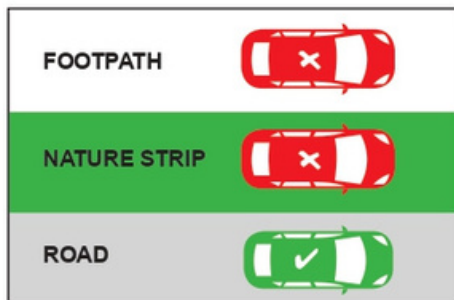
No stopping areas must be kept clear. If times/days are specified, restrictions are only applicable to the specified times/days. You cannot park in a P3 minute area for longer than three minutes.

School crossings



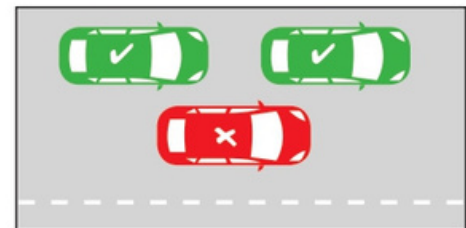
- Look out for flags and Crossing Supervisors
- You must stop for anyone waiting to cross, or who has started crossing
- Please remain stopped until the crossing is clear.

No parking on nature strips/footpaths



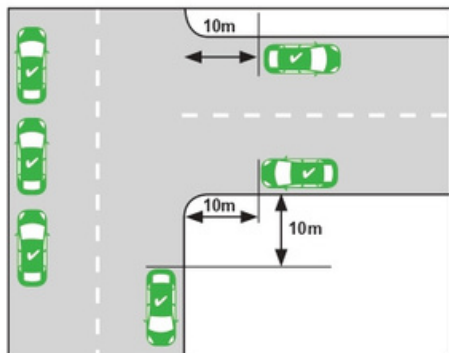
Parking is illegal on nature strips and footpaths.

Double parking



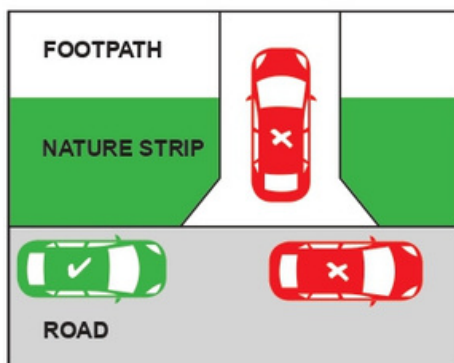
It is illegal to double park at any time. This affects the flow of traffic.

Within 10 metres of an intersection



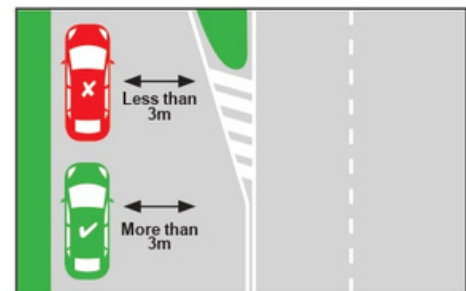
A driver must not stop with any part of their vehicle within 10 metres of an intersection unless signed otherwise.

Stopping across driveways



It is illegal to, stop/park across a driveway unless you stay in the car and are there for no more than two minutes and move immediately if required to do so to allow entry or exit by the owner/occupier.

3 metre gap for signage



At least 3 metres must be left between your vehicle and the centre dividing line to allow other vehicles to pass safely and not obstruct traffic.

What can you do to stay safe

- Supervise your children in or near traffic
- Walk or cycle to school with your child
- Respect all road rules, parking signs and instructions from authorities
- Wait on the same side of the street as your child
- Always let your child out of the kerb side of the car.

Free Telephone Interpreter Service

العربية	9679 9871	Italiano	9679 9874
Ελληνικά	9679 9873	Македонски	9679 9875
हिंदी	9679 9879	简体中文	9679 9857

ਪੰਜਾਬੀ	9679 9879	Tiếng Việt	9679 9878
தமிழ்	9679 9879	Other	9679 9879
Türkçe	9679 9877		

Celebrating Our Multicultural School Community



EVERYBODY IS WELCOME AT EDGARS CREEK PRIMARY

At ECPS we celebrate our wonderful and extensive multicultural community.

Each week at assembly, we acknowledge a country that is part of the heritage of people in our school community.

We have something new and exciting planned for the way we acknowledge these countries each week in 2024. We look forward to sharing this with you next year!



START THEIR BASKETBALL JOURNEY TODAY

hit the **HOOPS**



REGISTER NOW

For further information please email info@wcba.org.au

TERM 1 – 2024

MILL PARK STADIUM

**WEDNESDAYS
4pm – 5pm**

- 7 February 2024
- 14 February 2024
- 21 February 2024
- 28 February 2024
- 6 March 2024
- 13 March 2024
- 20 March 2024

EDGARS CREEK PS

**TUESDAYS
3.30pm – 4.30pm**

- 6 February 2024
- 13 February 2024
- 20 February 2024
- 27 February 2024
- 5 March 2024
- 12 March 2024
- 19 March 2024

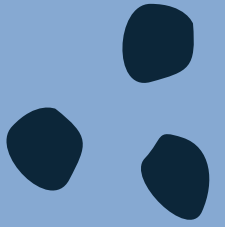
COST:

\$145 NEW PARTICIPANTS
\$100 RETURNING PARTICIPANTS



NEW PARTICIPANT PACK
INCLUDES A PERSONALISED
SINGLET AND BASKETBALL





WHITTLESEA COMMUNITY NEWS





PLAY

FOR
the
KICKS



come find your awesome

EDGARS CREEK PRIMARY SCHOOL
AUSKICK CENTRE

Thursdays 3:30pm-4:30pm

22nd February - 21st March

Contact: jake.murphy@afl.com.au



play.afl/auskick





PLAY

FIND YOUR FOOTY

**EDGARS CREEK PRIMARY SCHOOL
SUPERKICK CENTRE**
Thursdays 3:30pm-4:30pm
22nd February - 21st March
Contact: jake.murphy@afl.com.au



play.afl/superkick

Certificate III in

School Based Education Support CHC30221

Embark on a flexible and rewarding career where you can make a meaningful impact on the lives of children with additional needs.

prace

www.prace.vic.edu.au



Certificate III in School Based Education Support CHC30221

Education Support is a flexible and rewarding career where you can work in the classroom to support students with additional needs.

Prace delivers an industry driven and dynamic learning experience to ensure you are job-ready with the skills employers are looking for. With the guidance of expert teachers in a friendly and supportive classroom, you will develop the skills to:

- Support students with additional needs
- Support literacy and numeracy skills
- Contribute to planning educational programs
- Support the health, wellbeing and safety of students

You will participate in excursions, workshops and gain insights from industry guest speakers.

Pathways

Graduates are in demand and work in a range of educational settings, including primary and secondary schools and schools for children with additional needs. Graduates work as education assistants, teacher's aides and support workers.

Entry requirements

Aged 18 years and over. Moderate computer, email and internet skills. Plus digital technology access. English LLN skills at an industry entry standard.

How to enrol

Call 9462 6077 to arrange a pre-enrolment interview.



Location

Prace - Merrilands
Community Centre
35 Sturdee Street,
Reservoir

Dates and duration (TBC)

23 Feb - 20 Sept 2024
(Includes Thursday 28 March
2024 and 19 September 2024)
26 Sessions
2 Workshops
100-hour placement

Days and times

Fridays
9.15am - 3.15pm
Classes will not run on public or
school holidays

Study Mode

Face-to-face in a
classroom, self-directed
offsite tasks and research,
remote teacher support
sessions, practical
placement and industry/
assessment workshops

Fees

Gov. subsidised:
Concession \$90
Full \$450
Non-subsidised \$5850
^Special consideration may
apply
Plus \$10 Service & Amenities fee

*Course commencement is
subject to variation, sufficient
enrolments and eligibility
requirements. Prace encourages
individuals with disabilities to
participate in our programs and
activities. Prace TOID 4036*

*This training is delivered with
Victorian and Commonwealth
Government funding.*



Prace Main Office
Merrilands Community Centre - 35 Sturdee Street, Reservoir
Phone 9462 6077 | office@prace.vic.edu.au | www.prace.vic.edu.au

Certificate III in School Based Education Support CHC30221

Education Support is a flexible and rewarding career where you can work in the classroom to support students with additional needs.

Prace delivers an industry driven and dynamic learning experience to ensure you are job-ready with the skills employers are looking for. With the guidance of expert teachers in a friendly and supportive classroom, you will develop the skills to:

- Support students with additional needs
- Support literacy and numeracy skills
- Contribute to planning educational programs
- Support the health, wellbeing and safety of students

You will participate in excursions, workshops and gain insights from industry guest speakers.

Pathways

Graduates are in demand and work in a range of educational settings, including primary and secondary schools and schools for children with additional needs. Graduates work as education assistants, teacher's aides and support workers.

Entry requirements

Aged 18 years and over. Moderate computer, email and internet skills. Plus digital technology access. English LLN skills at an industry entry standard.

How to enrol

Call 9462 6077 to arrange a pre-enrolment interview.



Location

Online and Rosanna
Fire Station Community
House, 232 Lower Plenty
Rd, Rosanna

Dates and duration

Starting 7th May, 2024
26 Sessions, 2 Workshops
100-hour placement

Days and times

Tuesdays
9.15am - 3.15pm
Classes will not run on public or
school holidays

Study Mode

Alternates weekly
between online (Zoom)
and face-to-face in a
classroom, self-directed
offsite tasks and research,
remote teacher support
sessions, practical
placement and industry/
assessment workshops

Fees

Gov. subsidised:
Concession \$90
Full \$450
Non-subsidised \$5850
^Special consideration may
apply
Plus \$10 Service & Amenities fee

*Course commencement is
subject to variation, sufficient
enrolments and eligibility
requirements. Prace encourages
individuals with disabilities to
participate in our programs and
activities. Prace TOID 4036*

*This training is delivered with
Victorian and Commonwealth
Government funding.*



Prace Main Office
Merrilands Community Centre - 35 Sturdee Street, Reservoir
Phone 9462 6077 | office@prace.vic.edu.au | www.prace.vic.edu.au