

School Newsletter

Thursday 15th February 2024



Ph: 9407 7100 Web: <https://edgarscreekps.vic.edu.au>

Email: edgars.creek.ps@education.vic.gov.au

EDGARS CREEK
PRIMARY SCHOOL

RESPECT RESPONSIBILITY COURAGE CURIOSITY

Meet The Teacher Appointments

The opportunity to work together in partnership supporting your child is extremely important to their educational and social development. Teachers are looking forward to meeting with families on **Tuesday 5th March or Wednesday 6th March** and discussing how your child has settled into their school year and having a look at their learning space.

The Specialist team will be available to showcase their learning programs in their Specialist rooms, please feel free to visit these learning spaces on the evenings.

Physical Education - Gym

Visual Arts - Arts room

Performing Arts - Performing Arts room

Science - Science room

Spanish - Spanish room (Year 1 main building)

Digitech - Portables (Year 3 portables)

STEM - (Year 1 portables)

Please make sure you go onto Compass to book your spot.

IMPORTANT DATES

Wednesday 7th, 14th, 21st, 28th February

Prep Interviews

No school for Prep students on these days.

Every Friday from 9th February-22nd March

Year 5/6 Interschool Sports

Tuesday March 5th

Meet The Teacher

Wednesday March 6th

Meet The Teacher

Monday March 11th

Labour Day Holiday

No School on this Day

Wednesday 13th March

Naplan

Thursday 21st March

Harmony Day

Thursday 28th March

Last Day of Term 1



Newsletter Challenge
How many school logo's can you find? Write your answer and put it in the challenge box in the office. Winners drawn at assembly tomorrow.

Learning together for success.

STEM at ECPS in 2024



During STEM lessons last week, students undertook a challenging task: cutting a piece of A4 paper to create a sizable circle for 3 to 4 individuals to fit through.

Remarkably, two groups independently accomplished the task without assistance from teachers.

Congratulations to the students for demonstrating exceptional problem-solving, teamwork, and critical thinking skills.



Facebook



Don't forget to jump over to our Facebook page to check out all the fun activities that will be going on throughout 2024. On Facebook you will find picture of excursions and activities the student are doing and any updates we are wanting parents to see. Please note that any important information will be sent out on Compass. Click on the link to follow our Facebook page.

[facebook link](#)

COMPASS



It is very important that you activate **COMPASS** to access the school communication.

Compass is the main form of communication between the school and families. Many reminders and other information are sent using this system. Please see the School Office if you are having any difficulties.

Hot Days



We are committed to the wellbeing of our students and staff by requiring them to wear a hat when outdoors. Students **MUST** wear an Edgars Creek Primary School Hat available from the office or PSW - South Morang. If your child does not have a school hat, please purchase one ASAP and ensure that it has their name written clearly inside the hat. We will be enforcing a **NO HAT, NO PLAY** in the sun policy, which requires students without a hat to stay in an identified shaded area of the yard. We also have a heat policy that once the temperature exceeds 36 degrees, we will keep the students inside and run an Incremental Weather Timetable. This means students do not go outside for the play breaks, instead they do a variety of indoor games and activities which are made available to them. Likewise, if it is raining we have students remain inside.

Term 1 Interschool Sport - Years 5 & 6

Year 5 and 6 students selected to represent our school in cricket, soccer and basketball will commence their weekly Interschool Sport competition this Friday 9th February. All students not named in these squads will participate in a weekly intraschool sport competition at ECPS.

This week the Interschool Sport fixture is:

Division A Squads - Home vs Al Siraat College
(Soccer will be played on the Edgars Creek Secondary College soccer pitch)
(Cricket will be played on the Edgars Creek Secondary College oval)

Division B Squads - Away vs Harvest Home Primary School

Learning together for success.

Child Safe Standards

At Edgars Creek Primary School, we are committed to providing a child safe environment where children and young people are safe and feel safe, and their voices are heard about decisions that affect their lives. Our child safe policies, procedures, strategies and practices will be inclusive of the needs of all children, particularly Aboriginal and Torres Strait Islander children, children from culturally and linguistically diverse backgrounds, children with disabilities, and children who are vulnerable.

Edgars Creek Primary School has zero tolerance for child abuse.

Annual Privacy Reminder for our School Community

Our school collects, uses, disclose and stores students and parent personal information for standard school functions or where permitted by law, as stated in the **School's Privacy Policy**.

Please take time to read our school's notice, found on our website in the 'School' tab under our Policies:

<https://edgarscreekps.vic.edu.au/about-us/#policies>

We ask parents to review the guidance we provide on how we use Microsoft 365 safely at the school and what parents can do to further protect their child's information. If after reviewing the guidance, you have any questions or concerns regarding your child's using [Microsoft 365/ Google Workspace for education], please contact the school.

For more information about privacy, refer to: School's Privacy Policy- information for parents. This information is also available in ten community languages:

- Amharic
- Arabic
- Dari
- Gujarati
- Mandarin
- Somali
- Sudanese
- Turkish
- Urdu
- Vietnamese



IMPORTANT NOTICE: 2024 CONSENT & PARENT CONTRIBUTION

You need to give digital consent for your children to be able to participate in the programs listed below and can make your 2024 Parent Payment Contributions through the Compass Payment Centre.

It is extremely important that you identify your consent for the following through the Compass Payment Centre:

- Local Excursion Agreement (tick box)
- Headlice Inspections Agreement (tick box)
- Digital Technologies and BYOD Program Agreement (tick box)
- Photography, Filming and Recording Consent (this requires you to type yes or no)

Please contact the office if you need any assistance on 9407 7100.

Mothers Day Stall

Thank you to all the parents who have offered their time to help with the Mothers' Day Stall we are still needing the support of some more families. If you are interested in volunteering your time to help please contact Jess at the office on 94077100



GRADWEAR 2024



COMMEMORATE YOUR TIME AT
EDGARS CREEK PRIMARY SCHOOL WITH A

PERSONALISED
SHORT SLEEVE POLO SHIRT

\$45.00
EACH



PERSONALISED
BOMBER JACKET

\$56.50
EACH

Year 6 2024 Tops and Jackets

To all our New and current families who missed out on ordering your child's Year 6 top last year, you now will be able to order. Our year 6 Polo shirts and Bomber Jackets are available online and ready to order. Please click the link that will take you to the PSW website.

[PSW GRAD WEAR](#)



Orders will be available to order from **Monday 12th February** and will close **Friday 23rd February**. If you have any questions, please feel free to contact the office on 94077100.

ECPS SCHOOL UNIFORM REQUIREMENTS

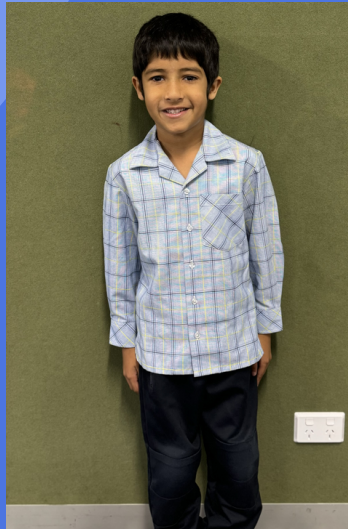


Summer/Winter Uniform Options

To be worn 3 days each week.



Short sleeve shirt & navy shorts or pants.



Long sleeve shirt & navy blue pants.



Summer dress & jumper or jacket.



School jumper or jacket. Navy blue pants or shorts.

Sport Uniform

To be worn 2 days each week.

(The day allocated for your child's home group and every Friday)



Pale blue polo for students in Years Prep to Year 5.
Navy blue shorts or pants.
Year 6 students have navy blue Polos.

Hijab, patka or other headwear



If your child wears a hijab, patka or other headwear, it is to be worn in navy blue, light blue or white only.

Lunch Mums



Lunch Mums are an external business that provides lunch orders to the local Schools. They pride themselves in providing wholesome and tasty lunches to the school community. Their aspirations are not only to offer healthy lunches and treats to children, but to also offer a simple and effective ordering solution to help busy parents, without the worry or fuss.

Lunch orders will be available Tuesday's and Thursday's. Parents/Students will be able to place orders via an online App "[My School Connect](#)". Please refer to the instructions below on how to set up an account and register your child/children.

Orders must be in by Tuesday 8.00am and Thursday 8.00am.

ECPS & Lunch Mums look forward to working with the school community in providing school lunches for your children



Please call the office if you require assistance to set up the app.



ORDER
ON
THE APP

MY SCHOOL CONNECT
Making online easy!

NEW ONLINE PORTAL

STEP 1. Visit My School Connect
Visit <http://www.myschoolconnect.com.au> and register as a parent.

STEP 2. Setup a child
Upon first login, setup your child/children.

STEP 3. Enter student details
Don't forget to add in all essential fields; name, school, class and any allergy information.

STEP 4. Allow your child to order for themselves
Setting 'yes' here will allow your child to login online and order.

PRO-TIP!
This is a great way to teach your child to manage their spending and choose healthy food. Remember to always supervise.

STEP 5. Set a daily spend limit
You can either enter a '\$dollar amount' or select 'unlimited'. The daily spend will only apply to your child's account.

STEP 7. Add funds to your account
Visit the 'Top up and financial history' section to add funds into your account by following the following steps:

Top up	Auto top up
a) Select payment type: Bank Account or Credit Card	a) Select payment type: Bank Account or Credit Card
b) Select a \$dollar amount	b) Add top up parameters: minimum balance & auto top up amount
c) Enter payment details	





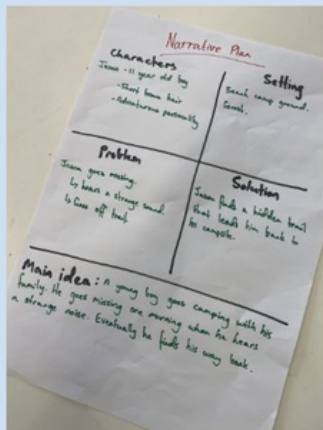
THIS WEEK IN 6A

We have been learning about the writing process and the steps we need to take to achieve a published text.



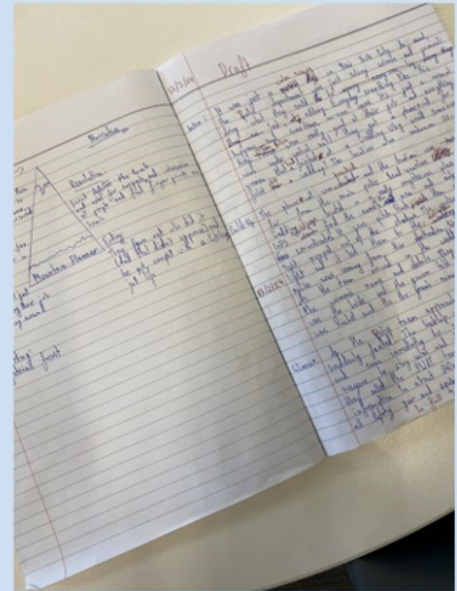
PLANNING

We began by sharing ideas with our peers and creating a plan for our writing.



DRAFTING

Next we write our draft, making modifications as we write.

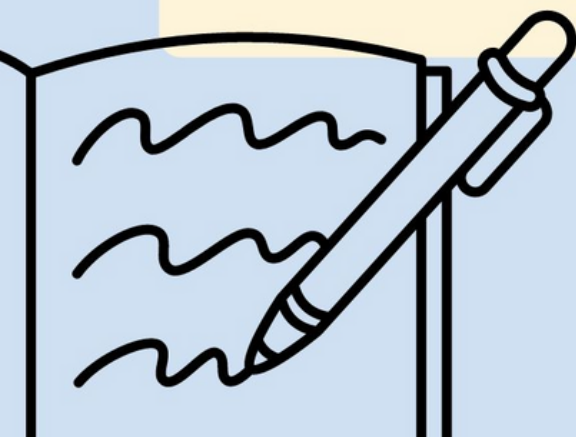


EDITING AND REVISING

We must proofread our writing and determine how we can make it better!

PUBLISHING

Lastly, we neatly handwrite or type our writing to present it to the readers.



NAPLAN 2024

NAPLAN will commence in Week 7 for Years 3 & 5. Tests will go over four days if you have any questions please speak to your child's homegroup teacher. See below for more information.

NAPLAN Information for parents and carers

2024



Why do students do NAPLAN?

The National Assessment Program – Literacy and Numeracy (NAPLAN) is a literacy and numeracy assessment that students in Years 3, 5, 7 and 9 sit each year. It is the only national assessment all Australian students have the opportunity to undertake.

As students progress through their school years, it is important to check how well they are learning the essential skills of reading, writing and numeracy.

NAPLAN assesses the literacy and numeracy skills that students are learning through the school curriculum and allows parents/carers to see how their child is progressing against national proficiency standards.

NAPLAN is just one aspect of a school's assessment and reporting process. It does not replace ongoing assessments made by teachers about student performance, but it can provide teachers with additional information about students' educational progress.

NAPLAN also provides schools, education authorities and governments with information about how education programs are working and whether young Australians are achieving important educational outcomes in literacy and numeracy.

Your child will do the NAPLAN tests online

Online NAPLAN tests are designed to provide precise results and are engaging for students. The tests are tailored (or adaptive) which means that each test presents questions that may be more or less difficult depending on a student's responses. This helps students remain engaged with the assessment.

Tailored testing allows a wider range of student abilities to be assessed and measures student achievement more precisely. A student's overall NAPLAN result is based on both the number and complexity of questions they answer correctly. Your child should not be concerned if they find questions challenging; they may be taking a more complex test pathway.

All Year 3 students will continue to complete the writing assessment on paper.

What does NAPLAN assess?

NAPLAN assesses literacy and numeracy skills that students are learning through their regular school curriculum.

Students sit assessments in writing, reading, conventions of language (spelling, grammar and punctuation) and numeracy. The questions assess content linked to the Australian Curriculum: English and Mathematics.

All government and non-government education authorities contribute to the development of NAPLAN test materials.

To find out more about NAPLAN, visit nap.edu.au.

Participation in NAPLAN

NAPLAN is for all Year 3, 5, 7 and 9 students. ACARA supports inclusive testing, so all students have the opportunity to participate in the national assessment program.

Adjustments are available for students with disability who have diverse functional abilities and needs.

Schools should work with parents/carers and students to identify, on a case-by-case basis, reasonable adjustments required for individual students with disability to access NAPLAN. Adjustments should reflect the support normally provided for classroom assessments.

To help inform these decisions, you may consult the [NAPLAN public demonstration site](#), the [Guide for schools to assist students with disability to access NAPLAN](#), and our [series of videos](#) where parents/carers, teachers and students share their experiences in using NAPLAN adjustments.

In exceptional circumstances, a student with a disability that severely limits their capacity to participate in the assessment, or a student who has recently arrived in Australia and has a non-English speaking background, may be granted a formal exemption.

Your school principal and your local test administration authority can give you more information on adjustments for students with disability or the process required to gain a formal exemption.

What can I do to support my child?

Students are not expected to study for NAPLAN. You can support your child by reassuring them that NAPLAN is a part of their school program and reminding them to simply do their best. Some explanation of NAPLAN is useful to help students understand and be comfortable with the format of the tests; however, it is not necessary for parents/carers to do this. Teachers will ensure students are familiar with the types of questions in the tests and will provide appropriate support and guidance.

ACARA does not recommend excessive preparation for NAPLAN or the use of services by coaching providers.

See the types of questions and tools available in the online NAPLAN assessments at [NAP - Public demonstration site](#).

How is my child's performance reported?

From 2023, NAPLAN results are reported against proficiency standards. There is a standard for each assessment area at each year level. Proficiency standards provide clear information on student achievement. They are set at a challenging but reasonable level expected for the child at the time of NAPLAN testing, based mainly on what has been taught in previous years of schooling. Student achievement is shown against 4 levels of proficiency: Exceeding, Strong, Developing and Needs additional support.

A NAPLAN individual student report will be provided by your child's school later in the year. If you do not receive a report, you should contact your child's school.

What if my child is absent from school on NAPLAN test days?

Where possible, schools may arrange for individual students who are absent at the time of testing to complete missed tests at another time during the school's test schedule.

How are NAPLAN results used?

- Students and parents/carers use individual results to discuss progress with teachers.
- Teachers use results to help identify students who need greater challenges or extra support.
- Schools use results to identify strengths and areas of need to improve teaching programs, and to set goals in literacy and numeracy.
- School systems use results to review the effectiveness of programs and support offered to schools.
- The community can see information about the performance of schools over time at myschool.edu.au.

Where can I get more information?

For more information about NAPLAN:

- contact your child's school
- contact your local test administration authority at nap.edu.au/TAA
- visit nap.edu.au

To learn how ACARA manages personal information for NAPLAN, visit nap.edu.au/naplan/privacy.

NAPLAN timetable

The NAPLAN test window is 9 days. This is to accommodate schools that may not have the capacity to complete the tests in a shorter time frame.

The NAPLAN test window starts on Wednesday 13 March 2024 and finishes on Monday 25 March 2024. Schools will schedule the tests as soon as possible within the testing window, prioritising the first week.

Test	Scheduling requirements	Duration	Test description
Writing	<ul style="list-style-type: none">• Year 3 students do the writing test on paper and on day 1 only.• Years 5, 7 and 9 writing must start on day 1 (schools must prioritise completion of writing across days 1 and 2, with day 2 only used where there are technical/logistical limitations).	Year 3: 40 min Year 5: 42 min Year 7: 42 min Year 9: 42 min	Students are provided with an idea or topic called a "writing stimulus" or "prompt" and asked to write a response in a particular genre (narrative or persuasive writing).
Reading	<ul style="list-style-type: none">• To be completed after the writing test	Year 3: 45 min Year 5: 50 min Year 7: 65 min Year 9: 65 min	Students read a range of informative, imaginative and persuasive texts, and then answer related questions.
Conventions of language	<ul style="list-style-type: none">• To be completed after the reading test	Year 3: 45 min Year 5: 45 min Year 7: 45 min Year 9: 45 min	Students are assessed on spelling, grammar and punctuation.
Numeracy	<ul style="list-style-type: none">• To be completed after the conventions of language test	Year 3: 45 min Year 5: 50 min Year 7: 65 min Year 9: 65 min	Students are assessed on number and algebra, measurement and geometry, and statistics and probability.



EDGARS CREEK
PRIMARY SCHOOL

MEET YOUR PREP TEAM FOR 2024

PREP A-HANNAH

Hi! My Name is Hannah. I cannot wait to see all of your smiling faces next year! Something you should know about me is that I love sport, traveling the world and my dog Nelson.



PREP B-DANIA

Hi everyone, my name is Daina and I am a Prep teacher. Outside of school, I love doing Pilates and travelling all around the world. A fun fact about me is that I LOVE chocolate! I am so excited for another amazing year of fun and learning in 2024.



PREP C-RANIQUE

Hi! My name is Ranique. I am excited to start my teaching journey at ECPS! I am looking forward to meeting the ECPS community. I own four cheeky birds: Kermit, Kiwi, Charlie and Pearl! I am passionate about providing a safe classroom environment through social and emotional learning.



PREP D-BIANCA

Hello everyone! My name is Bianca and I am a teacher in Prep. My favourite thing to do is learn how to cook new things and play with my cheeky dog Arlo! I am so excited for another great year of learning and fun.



PREP E-TEAGHAN

Hi everyone! My name is Teaghan and I am really looking forward to teaching Prep in 2024. I love spending time with my family and my two dogs, Murphy and Marlee. I enjoy cooking, my favourite food to cook is lasagne. I am so excited for another amazing year at Edgars Creek Primary School!



PREP F-SHELLEY

Hi! My name is Shelley, and I am super excited to be teaching Prep in 2024. I enjoy reading, going to the beach and being with my family and friends. I love to travel and eat chocolate. I can't wait to have lots of fun with you all in 2024!





EDGARS CREEK
PRIMARY SCHOOL

MEET YOUR YEAR 1 TEAM FOR 2024



1A-CARLY

Hi ECPS! My name is Carly, and I am so excited to continue teaching Grade 1 in 2024. I love cooking, reading, dancing, and laughing with the wonderful students and staff in our school community. 😊

1B-GEORGIA



Hi! My name is Georgia, and I will be teaching in the Year 1 Learning Community in 2024. I enjoy spending time with my family and friends, travelling, shopping, and eating chocolate! I love my two dogs Charlie and Willow. I am looking forward to another amazing year at ECPS!

1C-SWETA



Hi, my name is Sweta and I am very excited to be teaching Grade 1 in 2024! I have two children and love spending time with them. I enjoy reading books and going on camping with my family. I am really looking forward to getting to know each one of you!

1D-JASMINE



Hello! My name is Jasmine, and I will be teaching in the Year 1 Learning Community in 2024. I love spending time with friends and family, going to the beach and the colour yellow! I am looking forward to another amazing year at ECPS!

1E-EMMA

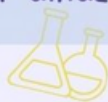


Hi! I'm Emma and I will be teaching Year 1 in 2024, I'm so excited to meet you all and have a great year of fun learning! My hobbies include playing soccer, running and eating yummy food. I also enjoy travelling and visiting new places. See you in 2024!

1F-CAROLYN



Hi! My name is Carolyn. I'm very excited to meet you all and I am looking forward to 2024! Some of my favourite things to do include trying new food and exploring our amazing natural environments.



ACADEMIC ACHIEVEMENT EXCELLENCE AND EFFORT

Home Group	Name	Award given...
6A	Ahnaf	For working extremely hard during each lesson and contributing to class discussions. Keep it up, Ahnaf!
6B	Hashim	For showing all the school values and coming to school everyday ready to learn! You are a great role model to those in your Learning Community. Keep up the fantastic work, Hashim!
6C	Vansh	For consistently demonstrating the school value of Responsibility by making sure you are choosing good fit spots on the floor and during learning time. Well done Vansh!
6D	Aahana	For her exceptional descriptive writing skills! Well Done, Aahana!
5A	Ashreet	For demonstrating the school value of Courage and Respect during her first weeks at Edgars Creek Primary School. Well done, keep up the amazing work, Ashreet!
5B	Hussain	For showing the school value of Responsibility by following classroom procedures. You have immersed yourself into the Year 5 culture, and we can see you're ready to learn. Well done, Hussain! Keep it up!
5C	Safa	For being a wonderful role model for the Year 5 Learning community by displaying the school values. You have been courageous and resilient. Keep up the great work, Safa!
5D	Jacinta	For showing the school values of Respect and Responsibility in everything you do, especially being a role model and in your learning. Keep up the wonderful job you've been doing!
4A	Dylan	For consistently showing the school values and giving your best efforts across all areas. You're a superstar Dylan, keep it up!
4B	Aminah	For being a great role model in our Learning Community, showing all of the School Values and encouraging others to do the same. Keep up the wonderful work, Aminah!
4C	Nazaha	For showing the school value of Respect in all learning areas. Keep up the good work Nazaha!
4D	Abbas	For completing all learning tasks to the best of his ability. Keep up the amazing work Abbas, we are so proud of you!
3A	Eisa	For showing the school value of Curiosity in Maths by asking questions and making accurate estimations. It has been wonderful to see you working so hard. Keep it up!
3B	Issa	For showing persistence and determination in maths after taking on feedback. Keep trying your best, Issa!
3C	Aakif	For demonstrating the school values, curiosity and courage, by being an involved learner and trying different ways to solve a problem. Keep up the great work, Aakif!
3D	Dominic	For showing the school value of Responsibility by always willing to help and support his peers in the classroom!
3E	Senasha	For demonstrating the school value of Respect when actively participating during writing. Thank you for being brave enough to share your thoughts and ideas.
3F	Hamza	For demonstrating the school value of Responsibility during learning time, by choosing a good-fit spot. Hamza, you have done an amazing job making responsible decisions. Well done!
3G	Noor	For demonstrating confidence when practicing the W2R codes. Well done for helping those around you. Keep up the great work, Noor!
2A	Benan	For showing the school value of Courage when settling into his new school with such confidence. Well done Benan!
2B	Amelia S	For displaying the school value of Courage by confidently sharing during show and tell. Well done on making new friends and having amazing start to the year at ECPS. Keep up the great work, Amelia!
2C	Advika	For showing the school value of Courage by settling into her new school with confidence. Keep up the positive attitude, Advika!
2D	Azzam	For showing the school value of Responsibility by putting in maximum effort with his learning and helping others in the classroom. Keep up the terrific learning, Azzam!
2E	Angie	For showing the school value of Courage when contributing to group discussions. You are a positive role model to your peers. Keep up the tremendous effort, Angie!
2F	Andrej	For always following expectations and listening to instructions. What a great start to the year! Well done Andrej!



ACADEMIC ACHIEVEMENT EXCELLENCE AND EFFORT

Home Group	Name	Award given...
1A	Ana	For consistently showing the school expectations of Being Respectful towards your peers and Being a Learner by sharing your ideas during floor time. Well done for also organising your learning materials and choosing a responsible learning spot. You're a superstar, Ana!
1B	Joel	For consistently demonstrating the school value of Respect by showing kindness to your peers and teachers and always showing whole body listening. Well done Joel on being a positive member of our Learning Community who is always ready to learn. You're a superstar!
1C	Micah	For always showing the school values of Respect and Responsibility in your homegroup. You are always kind and helpful towards your peers. I am so proud of you, Micah!
1D	Aya	For demonstrating the school values of Respect and Responsibility by showing whole body listening and always being ready to learn. You're a superstar, Aya! Keep up the amazing work!
1E	Naila	For showing the school values of Respect and Responsibility. Well done Naila on always showing whole body listening, being ready to learn and being a responsible member of our Learning Community. Keep it up!
1F	Koby	For consistently showing the school values of Respect and Responsibility. Well done Koby for always showing whole body listening, being ready to learn and being a responsible member of our Learning Community. Keep up the amazing effort!
PA	Soraia	For showing the school value of Courage by consistently having a go and always being eager to learn. Well done, Soraia. Keep up the great work!
PB	Irhaa	For consistently demonstrating the school value of Responsibility. You always make great choices in the learning space and encourage others to do the same. Keep up the amazing work, Irhaa!
PC	Eliana	For showing courage when learning. I love how you always have a go. Well done Eliana!
PD	Nelly	For showing the school values Respect and Courage each day by doing whole body listening and always trying her best. Well done Nelly!
PE	Frankie	For always showing the school values of Respect and Responsibility by showing that you are ready to learn. You are such a great role model to your peers! Keep up the amazing work, Frankie!
PF	Mya	For always demonstrating the school values every day at school. You are such a kind friend, always helping others and being very responsible. I am so proud of you. Well done, Mya. Keep it up superstar!
Digital Technologies – Binny	Hukmanreet	For showing the school values of Respect and Responsibility by demonstrating active listening and by always willing to help in Digital Technologies. Well done, Hukmanreet!
STEM - Sue	Yasmin 2C	For showing the school values of Respect and Responsibility in STEM sessions by being a role model to your class. Keep up the wonderful job you've been doing!
Science – Jemma	Sifti 3C	For always displaying all our school values and being a wonderful role model to your peers. Well done, Sifti! Keep being the amazing superstar you are!!
Performing Arts - Anita	Guransh 3C	For trying your best during Performing Arts lessons. You did a fantastic job with the song challenge and played the boom whackers really well! Keep up the great work!
Spanish- Yooky	Chris 2F	For showing the school value of Courage in Spanish classes and being a positive role model. Enhorabuena (Congratulations) Chris, keep up the great work!
PE – David	Karanvir 6D	For showing respect and his application to improve his skills
PE- Kristina	Abhay 1A	For showing the school value of responsibility during P.E by assisting to set up, pack up and be the demonstrator. Well done, Abhay! Keep up the great work.
Education Support- Paola	Liam 3E	For showing the school values of Responsibility when you are joining the morning circle. Well done, Liam!
Tutor Program - Tiarnah	Karanvir 6D	For showing the school values of curiosity and courage during his tutor sessions by asking questions about his learning and reading aloud to the group. Well done Karanvir, Keep up the great work!



Welcoming Wellbeing

Canine Comprehension

Meet George! George will be joining ECPS once a week with his owner Judy. Judy is a passionate educator who loves making learning fun and supporting every child to reach their full potential. George is a Spoodle, who loves working with students and teaching them the importance of caring for others. He also loves supporting students with their own individual emotional, learning and development journeys. George's zest for life is contagious! Canine Comprehension will run with Ruby and a group of students on Friday afternoons.



If you would like additional information about the program, please visit: <https://www.caninecomprehension.com.au>

CSEF 2024

2024 CSEF applications are now open. We encourage all families to read the attached information regarding their eligibility for additional funding under the Camps, Sports and Excursion Fund (CSEF). If you have any questions regarding this, please contact our School Office or head to the website below:

<https://www2.education.vic.gov.au/pal/camps-sports-and-excursions-fund/guidance/submitting-application>



Camps, Sports and Excursions fund eligibility

Below are the criteria used to determine a student's eligibility for the Camps, Sports and Excursions Fund (CSEF).

Criteria 1 – Eligibility

To be eligible* for the fund, a mature minor of sixteen years of age or over, a parent or legal guardian of a student attending a registered Government or non-government Victorian primary or secondary school must:

- on the first day of Term one, or;
 - on the first day of Term two.
- a) Be an eligible beneficiary within the meaning of the State Concessions Act 2004, that is, be a holder of Veterans Affairs Gold Card or be an eligible Centrelink Health Care Card (HCC) or Pensioner Concession Card (PCC) holder, OR
 - b) Be a temporary foster parent, and;
 - c) Submit an application to the school by the due date.

* A special consideration eligibility category also exists. For more information, see: [Camps, Sports and Excursions Fund \(CSEF\): Eligibility | education.vic.gov.au](https://www2.education.vic.gov.au/pal/camps-sports-and-excursions-fund/guidance/submitting-application)

Mature minors or parents who receive a Carer Allowance on behalf of a child, or any other benefit or allowance not income tested by Centrelink, are not eligible for the CSEF unless they also comply with one of (a) or (b) above.

Criteria 2 - Be of school age and attend school in Victoria

School is compulsory for all Victorian children aged between six and seventeen years of age inclusive.

For the purposes of CSEF, students may be eligible for assistance if they attend a Victorian registered primary or secondary school. Typically, these students are aged between five and eighteen years inclusive.

CSEF is not payable to students attending pre-school, kindergarten, home schooling, or TAFE.

Eligibility Date

For concession card holders, CSEF eligibility will be subject to the parent/legal guardian's concession card being successfully validated with Centrelink on 29 January 2024 and/or 15 April 2024.

Payment amounts

CSEF payment amount

The CSEF is an annual payment to the school to be used towards camps, sports and/or excursion expenses for the benefit of the eligible student.

- Primary school student rate: \$150.00 per year.
- Secondary school student rate: \$250.00 per year.

The CSEF is paid directly the school and will be allocated by the school towards camps, sports and/or excursion costs for your child.

For ungraded students, the rate payable is determined by the student's date of birth. For more information, see: [Camps, Sports and Excursions Fund \(CSEF\): Payment amounts | education.vic.gov.au](https://www2.education.vic.gov.au/pal/camps-sports-and-excursions-fund/guidance/submitting-application)

Foundation and Year 7 government school students who are CSEF recipients are also eligible for a uniform voucher. Schools are required to make applications on behalf of parents, so please register your interest at the school.

How to complete the application form

NOTE: ALL SECTIONS MUST BE COMPLETED BY PARENT/LEGAL GUARDIAN

1. Complete the PARENT/LEGAL GUARDIAN DETAILS section.
Make sure that the Surname, First Name, and Customer Reference Number (CRN) details match those on your concession card. You will also need to provide your concession card to the school.
If you are claiming as a Foster Parent or a Veteran Affairs Pensioner, you will need to provide a copy of documentation confirming your status as a temporary Foster Parent or provide your Veterans Affairs Pensioner Gold card to the school.
2. Complete the STUDENT/S DETAILS section for students at this school.
3. Sign and date the form and return it to the school office as soon as possible. The CSEF program for 2024 closes at the end of term two 2024.

CSEF payments cannot be claimed retrospectively for prior years.

Queries relating to CSEF eligibility and payments should be directed to the school.

Camps, Sports and Excursions Fund APPLICATION Form

Edgars Creek Primary School

015310

School Name

School REF ID

Parent/legal guardian details

Surname _____

First name _____

Address _____

Town/suburb _____ State _____ Postcode _____

Contact number _____

Centrelink pensioner concession OR Health care card number (CRN)

- - - OR

Foster parent* OR Veterans affairs pensioner (Gold Card)**

*Foster Parents must provide a copy of the temporary care order letter from the Victorian Department of Families, Fairness and Housing (DFFH).

**Applicants must provide a copy of the Veteran Affairs Gold card.

Student details

Child's surname	Child's first name	Student ID	Date of birth (dd/mm/yyyy)	Year level

I authorise the Victorian Department of Education (DE) to use Centrelink Confirmation eServices to perform an enquiry about my Centrelink customer details and concession card status to enable the business to determine if I qualify for a concession, rebate or service. I also authorise the Victorian Department of Families, Fairness and Housing (DFFH) to provide the results of any enquiry to DE regarding temporary care orders.

I understand that:

- DFFH or Centrelink will use information I have provided to DE to confirm my eligibility for the Camps, Sports and Excursions Fund and will disclose to DE personal information including my name, address, payment and concession card type and status.
- This consent, once signed, remains valid while my child is enrolled at a registered Victorian school unless I withdraw it by contacting the school.
- I can obtain proof of my circumstances/details from DFFH and provide it to my child's school so that my eligibility for the Camps, Sports and Excursions Fund can be determined.
- If I withdraw my consent or do not alternatively provide proof of my circumstances/details, I may not be eligible for the Camps, Sports and Excursions Fund provided by DE.
- Information regarding my eligibility for the Camps, Sports and Excursions Fund may be disclosed to DFFH and/or State Schools Relief for the purpose of evaluating concession card services or confirming eligibility for assistance.

You can request access to the personal information that we hold about you, and to request that any errors be corrected, by contacting your child's school.

Signature of applicant _____

Date ____ / ____ / ____



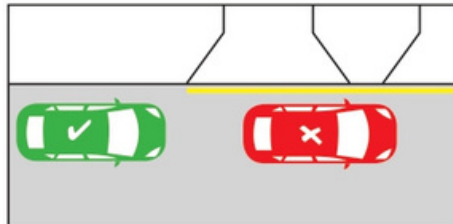
PARKING AND SAFETY AROUND SCHOOLS

Speed



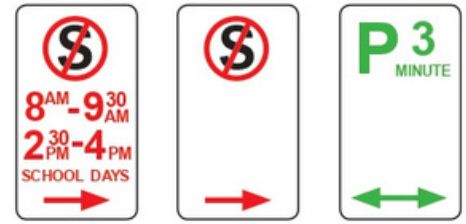
Look out for the reduced speed limit around schools and slow down to improve safety.

Yellow edge line



A driver must not stop on the side of a road marked with a yellow edge line.

Parking/Stopping signage



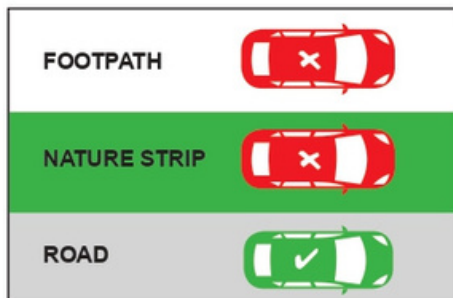
No stopping areas must be kept clear. If times/days are specified, restrictions are only applicable to the specified times/days. You cannot park in a P3 minute area for longer than three minutes.

School crossings



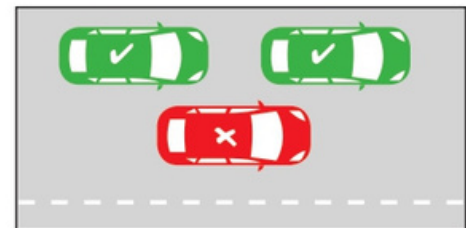
- Look out for flags and Crossing Supervisors
- You must stop for anyone waiting to cross, or who has started crossing
- Please remain stopped until the crossing is clear.

No parking on nature strips/footpaths



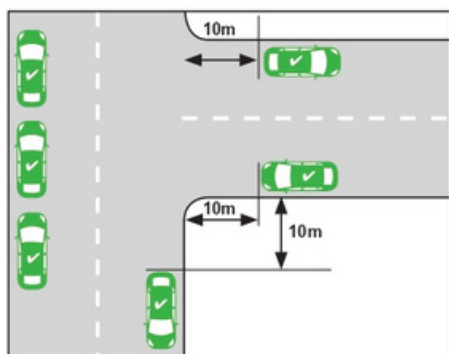
Parking is illegal on nature strips and footpaths.

Double parking



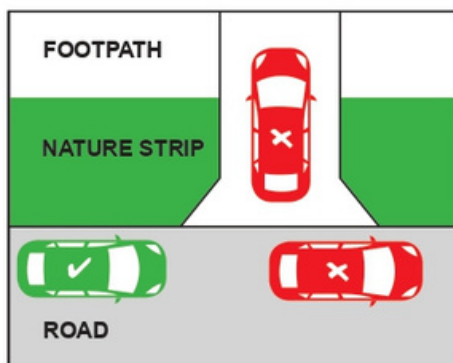
It is illegal to double park at any time. This affects the flow of traffic.

Within 10 metres of an intersection



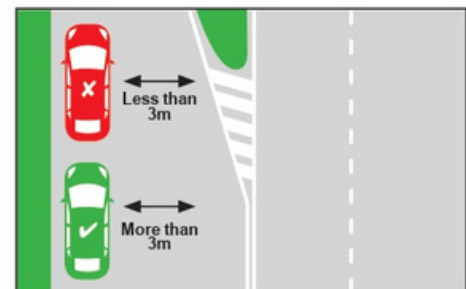
A driver must not stop with any part of their vehicle within 10 metres of an intersection unless signed otherwise.

Stopping across driveways



It is illegal to, stop/park across a driveway unless you stay in the car are there for no more than two minutes and move immediately if required to do so to allow entry or exit by the owner/occupier.

3 metre gap for signage



At least 3 metres must be left between your vehicle and the centre dividing line to allow other vehicles to pass safely and not obstruct traffic.

What can you do to stay safe

- Supervise your children in or near traffic
- Walk or cycle to school with your child
- Respect all road rules, parking signs and instructions from authorities
- Wait on the same side of the street as your child
- Always let your child out of the kerb side of the car.

Free Telephone Interpreter Service

العربية	9679 9871	Italiano	9679 9874
Ελληνικά	9679 9873	Македонски	9679 9875
हिंदी	9679 9879	简体中文	9679 9857

ਪੰਜਾਬੀ	9679 9879	Tiếng Việt	9679 9878
தமிழ்	9679 9879	Other	9679 9879
Türkçe	9679 9877		

Celebrating Our Multicultural School Community



EVERYBODY IS WELCOME AT EDGARS CREEK PRIMARY

At ECPS we celebrate our wonderful and extensive multicultural community.

Each week at assembly, we acknowledge a country that is part of the heritage of people in our school community.

We have something new and exciting planned for the way we acknowledge these countries each week in 2024. We look forward to sharing this with you next year!



**START THEIR BASKETBALL
JOURNEY TODAY**

hit the **HOOPS**



REGISTER NOW

For further information please email info@wcba.org.au

TERM 1 – 2024

MILL PARK STADIUM

**WEDNESDAYS
4pm – 5pm**

- 7 February 2024
- 14 February 2024
- 21 February 2024
- 28 February 2024
- 6 March 2024
- 13 March 2024
- 20 March 2024

EDGARS CREEK PS

**TUESDAYS
3.30pm – 4.30pm**

- 6 February 2024
- 13 February 2024
- 20 February 2024
- 27 February 2024
- 5 March 2024
- 12 March 2024
- 19 March 2024

COST:

\$145 NEW PARTICIPANTS
\$100 RETURNING PARTICIPANTS

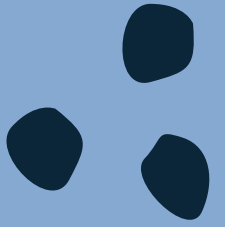


NEW PARTICIPANT PACK
INCLUDES A PERSONALISED
SINGLET AND BASKETBALL





EDGARS CREEK
PRIMARY SCHOOL



WHITTLESEA COMMUNITY NEWS





PLAY

FOR
the
KICKS



come find your awesome

EDGARS CREEK PRIMARY SCHOOL
AUSKICK CENTRE

Thursdays 3:30pm-4:30pm

22nd February - 21st March

Contact: jake.murphy@afl.com.au



play.afl/auskick





FIND YOUR FOOTY



PLAY

**EDGARS CREEK PRIMARY SCHOOL
SUPERKICK CENTRE**

Thursdays 3:30pm-4:30pm

22nd February - 21st March

Contact: jake.murphy@afl.com.au



play.afl.com.au/superkick

Certificate III in

School Based Education Support CHC30221

Embark on a flexible and rewarding career where you can make a meaningful impact on the lives of children with additional needs.

prace

www.prace.vic.edu.au



Certificate III in School Based Education Support CHC30221

Education Support is a flexible and rewarding career where you can work in the classroom to support students with additional needs.

Prace delivers an industry driven and dynamic learning experience to ensure you are job-ready with the skills employers are looking for. With the guidance of expert teachers in a friendly and supportive classroom, you will develop the skills to:

- Support students with additional needs
- Support literacy and numeracy skills
- Contribute to planning educational programs
- Support the health, wellbeing and safety of students

You will participate in excursions, workshops and gain insights from industry guest speakers.

Pathways

Graduates are in demand and work in a range of educational settings, including primary and secondary schools and schools for children with additional needs. Graduates work as education assistants, teacher's aides and support workers.

Entry requirements

Aged 18 years and over. Moderate computer, email and internet skills. Plus digital technology access. English LLN skills at an industry entry standard.

How to enrol

Call 9462 6077 to arrange a pre-enrolment interview.



Location

Prace - Merrilands
Community Centre
35 Sturdee Street,
Reservoir

Dates and duration (TBC)

23 Feb - 20 Sept 2024
(Includes Thursday 28 March
2024 and 19 September 2024)
26 Sessions
2 Workshops
100-hour placement

Days and times

Fridays
9.15am - 3.15pm
Classes will not run on public or
school holidays

Study Mode

Face-to-face in a
classroom, self-directed
offsite tasks and research,
remote teacher support
sessions, practical
placement and industry/
assessment workshops

Fees

Gov. subsidised:
Concession \$90
Full \$450
Non-subsidised \$5850
^Special consideration may
apply
Plus \$10 Service & Amenities fee

*Course commencement is
subject to variation, sufficient
enrolments and eligibility
requirements. Prace encourages
individuals with disabilities to
participate in our programs and
activities. Prace TOID 4036*

*This training is delivered with
Victorian and Commonwealth
Government funding.*



Prace Main Office
Merrilands Community Centre - 35 Sturdee Street, Reservoir
Phone 9462 6077 | office@prace.vic.edu.au | www.prace.vic.edu.au

Certificate III in School Based Education Support CHC30221

Education Support is a flexible and rewarding career where you can work in the classroom to support students with additional needs.

Prace delivers an industry driven and dynamic learning experience to ensure you are job-ready with the skills employers are looking for. With the guidance of expert teachers in a friendly and supportive classroom, you will develop the skills to:

- Support students with additional needs
- Support literacy and numeracy skills
- Contribute to planning educational programs
- Support the health, wellbeing and safety of students

You will participate in excursions, workshops and gain insights from industry guest speakers.

Pathways

Graduates are in demand and work in a range of educational settings, including primary and secondary schools and schools for children with additional needs. Graduates work as education assistants, teacher's aides and support workers.

Entry requirements

Aged 18 years and over. Moderate computer, email and internet skills. Plus digital technology access. English LLN skills at an industry entry standard.

How to enrol

Call 9462 6077 to arrange a pre-enrolment interview.



Location

Online and Rosanna
Fire Station Community
House, 232 Lower Plenty
Rd, Rosanna

Dates and duration

Starting 7th May, 2024
26 Sessions, 2 Workshops
100-hour placement

Days and times

Tuesdays
9.15am - 3.15pm
Classes will not run on public or
school holidays

Study Mode

Alternates weekly
between online (Zoom)
and face-to-face in a
classroom, self-directed
offsite tasks and research,
remote teacher support
sessions, practical
placement and industry/
assessment workshops

Fees

Gov. subsidised:
Concession \$90
Full \$450
Non-subsidised \$5850
^Special consideration may
apply
Plus \$10 Service & Amenities fee

*Course commencement is
subject to variation, sufficient
enrolments and eligibility
requirements. Prace encourages
individuals with disabilities to
participate in our programs and
activities. Prace TOID 4036*

*This training is delivered with
Victorian and Commonwealth
Government funding.*



Prace Main Office
Merrilands Community Centre - 35 Sturdee Street, Reservoir
Phone 9462 6077 | office@prace.vic.edu.au | www.prace.vic.edu.au