

# School Newsletter

Thursday 6th April 2023



**Ph:** 9407 7100 **Web:** <https://edgarscreekps.vic.edu.au>

**Email:** [edgars.creek.ps@education.vic.gov.au](mailto:edgars.creek.ps@education.vic.gov.au)

**EDGARS CREEK  
PRIMARY SCHOOL**

RESPECT RESPONSIBILITY COURAGE CURIOSITY

## Last Day Of Term 1

Term 1 has been very busy as we welcomed new staff and students to ECPS.

The past 11 weeks have been full of new learning spaces, play equipment, different teachers, making new friends and living our school values of Courage, Responsibility, Respect and Curiosity.

We have continued to promote our School Motto of Learning Together for Success which embraces our commitment to lifelong learning.

Our 2023 Mantra, 'Unity Strengthens Community', has been seen every day, especially when we celebrated Harmony Day together, recognising all our cultures and different backgrounds.

We welcomed our chickens to ECPS which all the students have enjoyed watching hatch and grow and we will continue to watch them grow throughout the year.

We want to thank everyone for their commitment to making Edgars Creek Primary School an outstanding place to learn and grow. We wish you all a safe and happy holiday period.

Looking forward to seeing you all on Monday April 24th for the start of Term 2.

### IMPORTANT DATES

#### **Thursday 6th April**

Last day of Term 1- **2:30pm finish**

#### **Monday 24th April**

First day of Term 2

#### **Tuesday 25th April**

ANZAC Day- No school

#### **Tuesday 16th May**

School Photos

#### **Wednesday 7th June**

Student Free Day

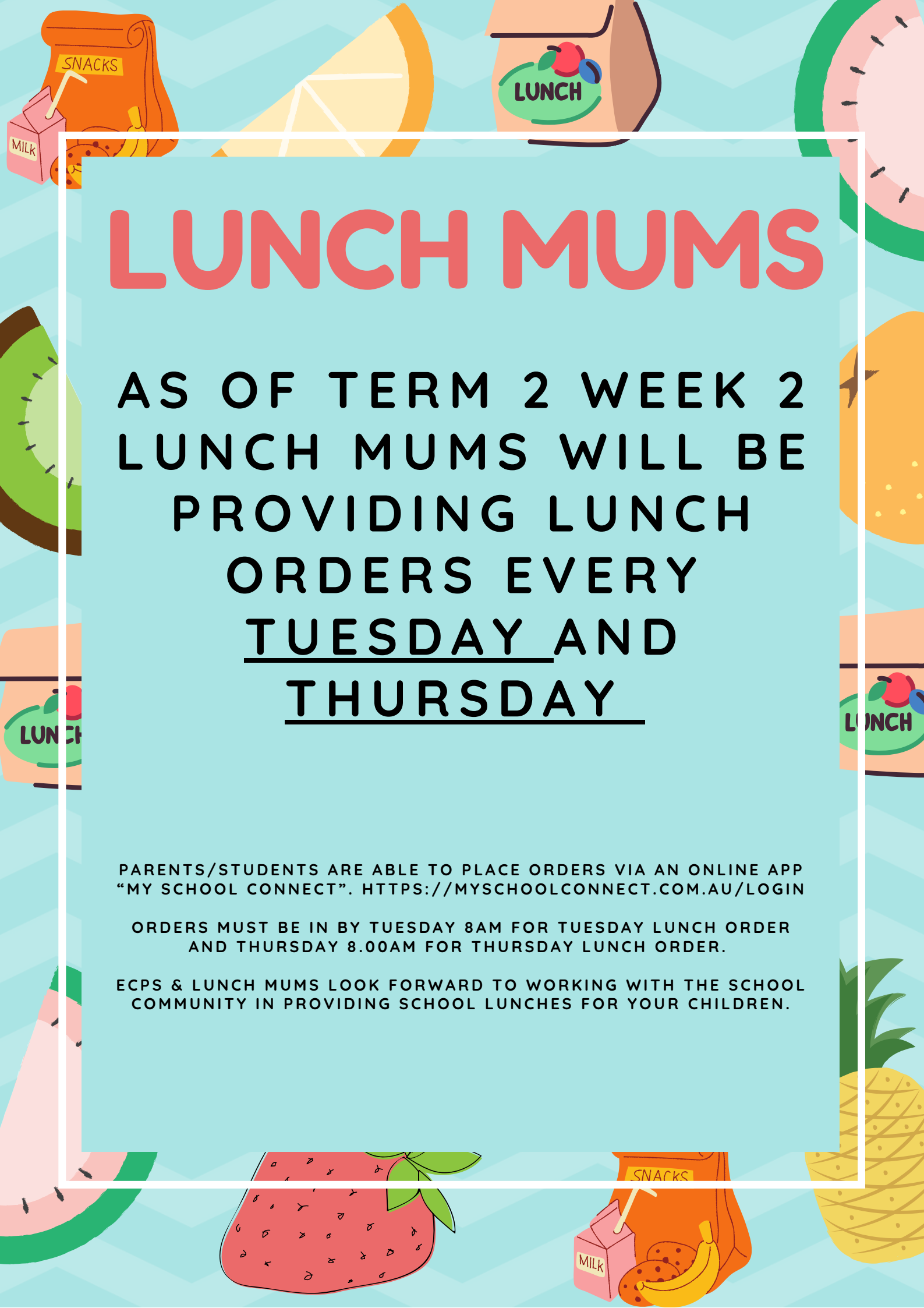
*Mother's*  
DAY

WE ARE KINDLY ASKING FOR MOTHERS' DAY DONATIONS FOR OUR UPCOMING MOTHERS DAY RAFFLE IN TERM 2. IF YOU HAVE A SMALL BUSINESS AND WOULD LIKE TO DONATE A GIFT OR CAN HELP CONTRIBUTE IN A DONATION THAT WOULD BE MUCH APPRECIATED.

Please contact Jess at the office or email [edgars.ps@education.vic.gov.au](mailto:edgars.ps@education.vic.gov.au)

[edgars.creek.ps@education.vic.gov.au](mailto:edgars.creek.ps@education.vic.gov.au)

*Learning together for success.*



# LUNCH MUMS

AS OF TERM 2 WEEK 2  
LUNCH MUMS WILL BE  
PROVIDING LUNCH  
ORDERS EVERY  
TUESDAY AND  
THURSDAY

PARENTS/STUDENTS ARE ABLE TO PLACE ORDERS VIA AN ONLINE APP  
"MY SCHOOL CONNECT". [HTTPS://MYSCHOOLCONNECT.COM.AU/LOGIN](https://myschoolconnect.com.au/login)

ORDERS MUST BE IN BY TUESDAY 8AM FOR TUESDAY LUNCH ORDER  
AND THURSDAY 8.00AM FOR THURSDAY LUNCH ORDER.

ECPS & LUNCH MUMS LOOK FORWARD TO WORKING WITH THE SCHOOL  
COMMUNITY IN PROVIDING SCHOOL LUNCHES FOR YOUR CHILDREN.



# FUN RUN

We would like to thank all the teachers, house captains and, vice captains for helping out. All the houses did an amazing job and showed great sportsmanship.

Congratulations!

Doherty 4th place with 671 points

Wollert 3rd place with 871 points.

Jenkins 2nd place 895 points.

Mc Donald 1st place 908 Points.

WELL, DONE MC DONALD HOUSE  
YOU ARE THE FUN RUN CHAMPIONS  
OF EDGARS CREEK PRIMARY  
SCHOOL 2023.

From Grace 6B and Sara 6C



*Learning together for success.*

## CSEF 2023

We encourage all families to read the attached information regarding their eligibility for additional funding under the Camps, Sports and Excursion Fund (CSEF). If you have any questions regarding this, please contact our School Office.



## Gastro

There is currently Gastro affecting all year levels across the school. Gastro symptoms are not limited to but may include:



- High temperature
- Nausea
- Vomiting
- Diarrhea
- Stomach Cramps

To assist in the prevention of spreading any illness, ECPS encourages good hygiene practices including: **regular washing of hands, using hand Sanitiser before eating, washing hands with soap and water after the toilet, Not sharing food or water bottles and keeping your children home if they are unwell.**

We ask that parents assist in minimising transmission by not sending unwell children to school. It's the Department's policy that children who have had diarrhea and vomiting are NOT permitted at school 24 hours after their last loose bowel movement or vomit. Gastro is highly contagious and can easily spread.

If you have any concerns regarding your child's health, we advise that you seek medical advice from your family doctor. Please notify the school if your child is unwell.

Should you have any additional questions, please feel free to contact the school between 8:30 am and 4:00pm.

## No Dogs Allowed

Here at ECPS we have a No Dogs Allowed policy. When picking up or dropping off children please keep in mind that we do not allow dogs on the school grounds at any time. We kindly ask that if you are bringing your dog for a walk please wait outside the school grounds with your dog.



---

## OUR 2023 SCHOOL MANTRA

Each year we develop an ECPS School Mantra which guides our work for that year. In our first year, 2021, it was Bringing Everyone Together, in 2022 it was Growing Stronger Together.

For 2023 our school mantra is:

**Unity Strengthens Community**

---

*Learning together for success.*

# Child Pick Up

When you need to pick up your child early from school, please contact the school via email or phone to inform us of the time you will be collecting your child so we can have them in the office for you. On Fridays when we hold our weekly assembly, advance notice to pick your child up is required. If you are needing to collect your child during break times, unfortunately our buildings are locked so there will be a wait.

School finishes at **3:15pm**, please ensure you have your child picked up by then. If that time isn't suitable for you, afterschool care is available, please sign up below.

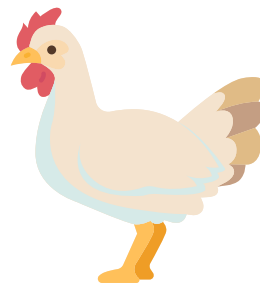
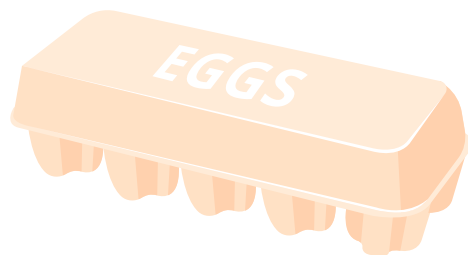
[Xap - An all-in-one childcare Management Platform](#)

# Egg Cartons

Dear ECPS families,

We are in need of empty egg cartons for eggs from our chickens.. If you have any empty egg cartons can you please bring these to the office.

We will collect the eggs from our chickens and then sell the eggs, but we need egg cartons.



## EXTRA CURRICULAR Activities



It's that time again! Time for our Extra Curricular Activities at lunch times to kick off. These will begin in Term 2.

If you are a student and you would like to run one of the activities with a teacher, please fill out the survey. If you have any other ideas for an Extra Curricular Activity at lunch time please also write down your idea. We love hearing from you!

Thank you for showing our school values of Responsibility and Courage when putting your hand up to help run an activity!

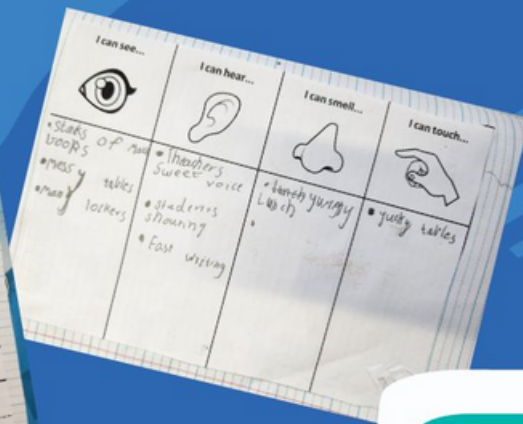
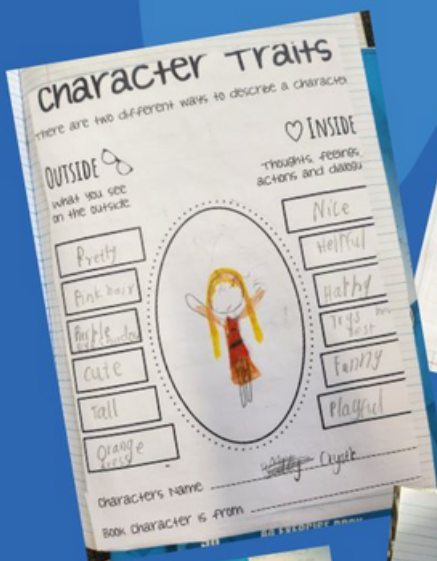
<https://forms.gle/BRSvQB5jkHK4FrWF7>

*Learning together for success.*

# 3A News

## NUMERACY

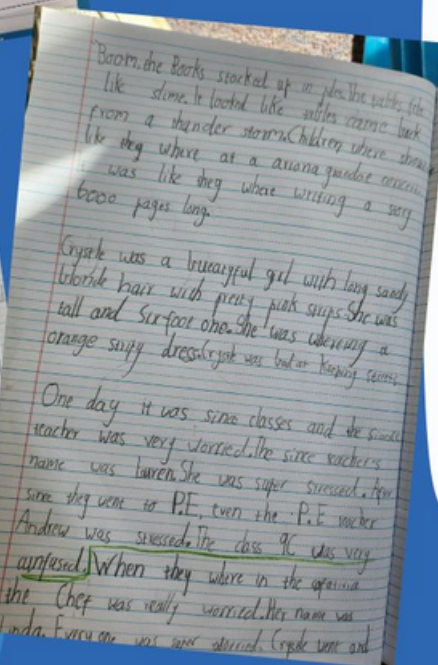
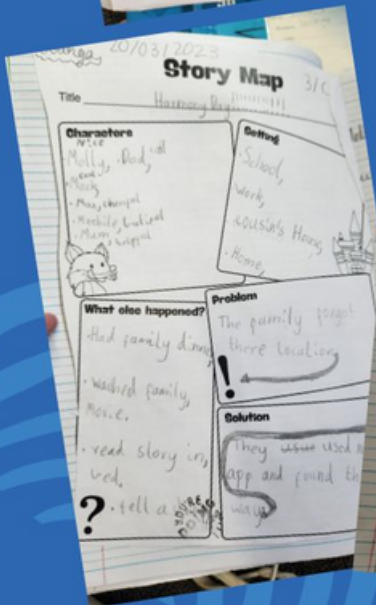
This term in Maths students have been learning about different addition strategies to solve addition problems. Students spent this week using those skills to create their very own board games.



## LITERACY

During Writing students have been looking at Narrative writing.

They explored different ways to plan their writing including how to add more detail to their characters and setting. Some students even started their narratives with an Onomatopoeia!



# Mathletics

## Term 1 Award Recipients

Congratulations to the following students in each Learning Community who have earned the highest amount of Mathletics points this term

### Prep A-C

Gold: Gurmaan Singh

Silver: Jackson N

Bronze: Sehaj H

### Prep D-F

Gold: Norah S

Silver: Ana S

Bronze: Ekam Jot S

### Year 1 A-C

Gold: Jedaiah-Rome

Silver: Haley L

Bronze: Niroshan S

### Year 1 D-F

Gold: Yania B

Silver Jesvick K

Bronze: Mansirat S

### Year 2 A-C

Gold: Gurleen Kaur G

Silver Eveleen K

Bronze: Shayna M

### Year 2 D-F

Gold: Neriah S

Silver Yalsu A

Bronze: Navraj B

### Year 3

Gold: Radh A

Silver: Kanisha P

Bronze: Shruthi S

### Year 4

Gold: Avleen Kaur

Silver: Jaslyn K

Bronze: Shreeya S

### Year 5

Gold: Sahibjot S

Silver: Rayhaan J

Bronze: Gurmeet S

### Year 6

Gold: Aiden D

Silver: Amen A

Bronze: Lucas L



EDGARS CREEK  
PRIMARY SCHOOL

# MEET YOUR YEAR 6 TEAM FOR 2023

6A



Hi Everyone! My name is Pavlinka. I love being a part of the year 6 team! I love spending my time outdoors, reading books or watching docuseries on everything. My favourite colour is green and love eating Lasagna! Spending time with my husband and baby boy is something I cherish the most.

6B

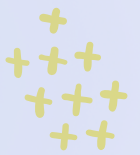
Hey! My name is Mark. I love playing and watching basketball. I am so happy to be a part of the year 6 team.



6C



Hi, my name is Tayla and I am so happy to be a part of the year 6 team! When I am not teaching, I love spending time with my family and friends, reading, or playing and watching sports. I can't wait to share lots of fun experiences and learn and grow together!





# ECPS School Tours



Tours will be held in Term Two.  
These tours will provide the opportunity to view and learn about our school.

**Tour Dates:**  
**Thurs 4th May**  
**Tues 9th May**  
**Wed 10th May**  
**Thurs 25th May**  
**Thurs 15th June**

Tours start at 10am and are approx. 45 minutes.  
Tours leave from the School Office.



**BOOKINGS ESSENTIAL**  
**BOOK VIA**

**[ecpstours2023.eventbrite.com](https://ecpstours2023.eventbrite.com)**

# Welcoming Wellbeing

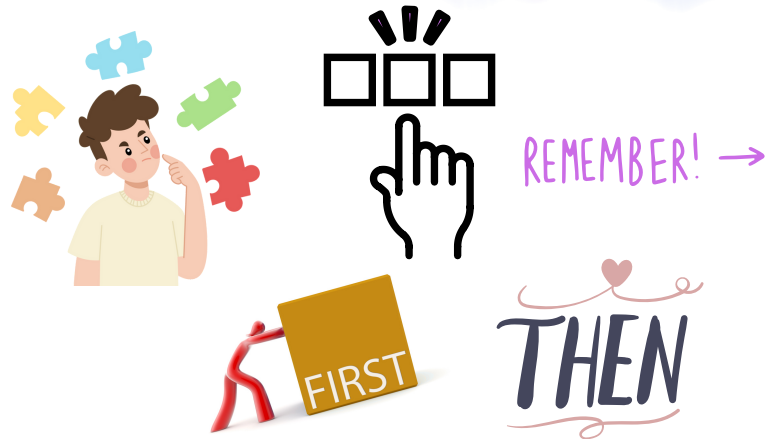
## Using Positive Language

Parents and carers play a vital role in the healthy development of children. Sometimes a small shift in language might seem small but be a very powerful positive change in conversations with children.

### Some strategies to try at home

#### Thinking time:

Remember to remain calm and patiently repeat statements to your child. Remember that children are also learning language, and it may take seconds or even minutes to process information and decide how they are going to respond.



#### Offer a choice:

When you provide children with a choice of things that they can do, or wear, or go, a child is more likely to select one of the offered options as this will still make them feel as though they are in control. This strategy will work for you as a parent/carer as you provided the choices meaning you approve of them.

#### Replace "don't" with "do".

It is more likely that your child will make appropriate choices when you help them understand what options are available. Tell your child what they *can* do more than what they *can't* do.

#### Use language such as "first - then".

Another positive strategy to let a child know they have permission to do something in a positive way is to use a "first-then" statement. For example, if your child wants to play a game but you would like him to pack away his toys first, you could say "First, pick up your toys, then you can play your game."

#### Using statements such as "I remember".

Sometimes children may need help in remembering certain things. "I remember" statements are very useful as they state the information as a fact, and give students information they need to make the correct choice on their own. For example: "I remember that you need to put your hat on before you go outside in the sun."



*Positive relationships with parents, carers, teachers and family members provide the foundation for a positive, happy child. Use of positive language has been proven to be the building blocks for self esteem and future positive behaviour choices.*

# Celebrating Our Multicultural School Community



EVERYBODY IS WELCOME AT EDGAR'S CREEK PRIMARY

At ECPS this year we are celebrating our wonderful and extensive Multicultural community. Each week at assembly, we are unveiling a different cultural flag.

This week we are celebrating those in the ECPS Community from

## Hong Kong



# 2023 Photo Day

## Online Order Instructions

Dear Parents and Students,

### Edgars Creek Primary School PHOTO DAY IS 16-05-2023

Your school prefers orders to be placed online.

However, if unable to order online, please complete your order using the Envelope at your school office. It is important that the order instructions (below) are followed.

**\*\* IMPORTANT PLEASE NOTE – ONLINE ORDERING FOR SIBLING PHOTOS WILL CUT OFF ON 15-05-2023 \*\***

**ONLINE ORDERING** Your child's school photos are now available for secure online purchase, please note if you are ordering online, you do not need to return an envelope to the school

#### 4 EASY STEPS TO ONLINE SCHOOL PHOTO ORDERING

Step 1 [Click Here](#). - For online ordering process for your school.

- OR - Go to [www.advancedlife.com.au](http://www.advancedlife.com.au) before photo day and enter your school code [E3J TF4 MH4]

Step 2: Enter your student's details

Step 3: Choose the package that best suits your needs (all orders will be returned to the school for collection)

Step 4: Pay for the photos via the shopping cart (upper right corner of the page)

**\*\*Online Orders have a 1.5% merchant fee applied when using Visa, Mastercard or PayPal.**

Please Note: If you miss photo day, portrait and group packages can still be ordered online for 7 days afterwards with no late fees. After that time, late orders will require separate processing and handling and therefore will incur a \$15 late fee per package.

**FAMILY / SIBLING PHOTOS** No envelope required if ordering online

#### 3 EASY STEPS TO ONLINE SCHOOL PHOTO ORDERING

- Go to [www.advancedlife.com.au](http://www.advancedlife.com.au) before photo day and enter your school code [E3J TF4 MH4]
- Family/Sibling photo orders online close on [15/05/2023]
- Orders can be placed by returning an envelope up until photo day with exact cash amount.

#### ORDERING USING AN ENVELOPE

##### PLEASE SEE THE SCHOOL OFFICE TO RECEIVE ONE AND RETURN ON PHOTO DAY ONLY

**Step 1: Student Details:** Complete the student details section on the front of the order envelope.

Please use black or blue pen.

**Step 2: Purchase Details:** Complete the purchase details on the front of the envelope.

**Step 3: Payment Method:** Select your payment method.

Credit Card – Online Only at [www.advancedlife.com.au](http://www.advancedlife.com.au)

Cash – Please enclose correct money – as change is not available

Please Note: A portrait and a class group photograph will be taken of every student at the school, regardless of purchase. Photographs of your children taken as part of a class group are only permitted to be distributed within their own class. Your child's name will appear on the class group photo. If you Do Not wish your child to be photographed, please contact your school office with your instructions prior to Photo Day.

Please feel free to contact us via email or phone should you have any queries regarding your child's school photo order.

[info@advancedlifevic.com.au](mailto:info@advancedlifevic.com.au) or 03 9852 1133

Advancedlife Team

**IMPORTANT:** Sibling packages must be ordered before photo day, so your school knows to collect your children on photo day for a sibling photo. Final online orders for siblings close at 12.00 a.m. the night before your school's first photo day. If you miss the order cut off, let your school know you would like a sibling photo taken, collect a sibling envelope from your school and return the completed order envelope (including exact cash payment) directly to our photographers. Sibling photographs are by request and cannot be ordered after photo day. Only siblings attending the school are permitted to be photographed.

## A

### PACK

DELUXE

#### DELUXE PACKAGE \$48.00



203x254mm (10x8")



126x176mm (4)



26x41mm (6)



38x135mm



82x127mm



38x63mm



63x87mm



package includes high res digital portrait image

## B

### PACK

VALUE

#### VALUE PACKAGE \$33.00



203x254mm (10x8")



126x176mm (2)



26x41mm (3)



38x135mm



82x127mm



38x63mm



package includes high res digital portrait image



## C

### PACK

REGULAR

#### REGULAR PACKAGE \$28.00



203x254mm (10x8")



126x176mm (2)



26x41mm (3)



package includes high res digital portrait image



## D

### PACK

BASIC

#### BASIC PACKAGE \$25.00



126x176mm (2)



26x41mm (3)



package includes high res digital portrait image



#### E - ENLARGEMENT \$22



203x254mm (10x8")

Option E **DOES NOT** include a high res digital portrait image



#### PERSONALISED MUGS \$20



Available online only



Flyer Code S

## HOW TO ORDER

### OPTION 1 ORDER ONLINE NOW

Online payment options include Visa, Mastercard and PayPal. Alternatively, you can choose to pay over 10 weeks using LatitudePay.

#### STEP 1

Find your school's shared 9 digit community order code on the *advancedlife* order envelope.



#### STEP 2

Go to [www.advancedlife.com.au](http://www.advancedlife.com.au) on your computer, phone or tablet.

Enter your school's 9 digit order code in the 'order & download' box. This will take you to the secure online ordering site for your school.



#### STEP 3

Click on 'Order Photos' and complete your details and choose your package, then follow the payment process. During this process you can place orders for additional children at your school and sibling photos, if available.



### OPTION 2 CASH/ENVELOPE ORDERING

Schools prefer orders placed online. However, if you are unable to order online, please complete your order using the order envelope provided.

#### STEP 1

Complete a separate order envelope for each individual child's package/s ordered. If ordering for more than one child, payment should be enclosed in the envelope of the eldest child and this should be indicated on the envelope of the other child/children (the envelope that does not have cash enclosed).

#### STEP 2

Enclose exact cash payment in one envelope for the package/s you are ordering. Payment for more than one child should be in the eldest child's envelope and marked at the bottom of the envelope in the space provided.

#### STEP 3

Return your completed envelope/s, with correct cash payment, to our photographers on photo day.

**Please note:** You must enclose exact correct payment, as change is not available. Credit card payments can only be made online and we no longer accept cheques. There is a separate envelope for sibling photo orders, should your school choose to offer sibling photos.

## FREQUENTLY ASKED QUESTIONS

### SIBLING PHOTOS

Online orders for siblings close at 12.00 a.m. the night before your school's first photo day. If you miss the order cut off, let your school know you would like a sibling photo taken, collect a sibling envelope from your school and return the completed order envelope (including exact cash payment) directly to our photographers. Sibling photographs are by request and cannot be ordered after photo day.

### ONLINE ORDER RECEIPTS

An order receipt will be emailed to the email address you provide during the ordering process. Please note that orders placed via PayPal can take up to 48 hours for payment to be processed and a receipt sent.

### ARE THERE FEES FOR ORDERING ONLINE?

There are no fees for LatitudePay or envelope ordering. There is a 1.5% merchant fee applied when using Visa, Mastercard or PayPal. For more information go to: [www.advancedlife.com.au/FAQ](http://www.advancedlife.com.au/FAQ)

### CO-PARENTING FAMILIES

If you prefer to personally collect your photographic package from the school office, rather than have it sent home with your child, please select the "Collect Your Pack" option when you order online.

### NOT FOR PUBLICATION STUDENT INFORMATION

If your child's image is "not for publication" and your school is aware of your decision, your child should not be presented to our photographers on photo day and school photographs will not be available for purchase. All students presented to our photographers by your school for a photo on photo day will be photographed, their images will appear in school photography packages and these packages will be available to purchase.

### REFUND POLICY

Check your order carefully, as refunds are not available for incorrect choice. No refunds are available once your portrait image has been downloaded. To find out more, please visit: [www.advancedlife.com.au](http://www.advancedlife.com.au)

### CONTACT US

Contact us at [www.advancedlife.com.au/contact](http://www.advancedlife.com.au/contact)

**advancedlife**  
school photography & print specialists

**CAMPS, SPORTS AND EXCURSIONS FUND (CSEF) APPLICATION FORM**

EDGARS CREEK PRIMARY SCHOOL

School Name

015310

School REF ID

**Parent/carer details**

Surname \_\_\_\_\_

First name \_\_\_\_\_

Address \_\_\_\_\_

Town/suburb \_\_\_\_\_ State \_\_\_\_\_ Postcode \_\_\_\_\_

Contact number \_\_\_\_\_

Centrelink pensioner concession **OR** Health care card number (CRN)

-    -    -  **OR**

Foster parent under a temporary care order\* **OR**  Veterans affairs pensioner (Gold Card)\*\*

\*Foster Parents must provide a copy of the temporary care order letter from the Department of Families, Fairness and Housing (DFFH).

\*\*Applicants must provide a copy of the Veteran Affairs Gold card

Is this an application for special consideration (no CRN needed)? Yes  No

**Student details**

Student's surname	Student's first name	Student ID	Date of birth (dd/mm/yyyy)	Year level

I authorise the Department of Education and Training (DET) to use Centrelink Confirmation eServices to perform an enquiry of my Centrelink customer details and concession card status in order to enable the business to determine if I qualify for a concession, rebate or service. I also authorise the Australian Government Department of Families, Fairness and Housing (DFFH) to provide the results of that enquiry to DET.

I understand that:

- DFFH will use information I have provided to DET to confirm my eligibility for the Camps, Sports and Excursions Fund and will disclose to DET personal information including my name, address, payment and concession card type and status.
- this consent, once signed, remains valid while my child is enrolled at a registered Victorian school unless I withdraw it by contacting the school.
- I can obtain proof of my circumstances/details from DFFH and provide it to DET so that my eligibility for the Camps, Sports and Excursions Fund can be determined.
- If I withdraw my consent or do not alternatively provide proof of my circumstances/details, I may not be eligible for the Camps, Sports and Excursions Fund provided by DET.
- Information regarding my eligibility for the Camps, Sports and Excursions Fund may be disclosed to the DFFH and /or State Schools Relief for the purpose of evaluating concession card services or confirming eligibility for assistance.

You are able to request access to the personal information that we hold about you, and to request that any errors be corrected, by contacting your child's school.

Signature of applicant \_\_\_\_\_ Date \_\_\_\_/\_\_\_\_/\_\_\_\_

## CSEF ELIGIBILITY

Below are the criteria used to determine a student's eligibility for the Camps, Sports and Excursions Fund (CSEF).

### Criteria 1 – General eligibility

To be eligible for the fund, a parent or carer of a student attending a registered Government or non-government Victorian primary or secondary school must:

- on the first day of Term one
  - on the first day of Term two
- a) be a holder of one or more of the eligible financially-means tested cards **OR** be a temporary foster parent, and;
- b) submit an application to the school by the due date.

For the list of eligible financially-means tested cards refer to the CSEF Policy:

<https://www2.education.vic.gov.au/pal/camps-sports-and-excursions-fund/policy>

Parents who receive a Carer Allowance on behalf of a child, or any other benefit or allowance not income tested by Centrelink, are not eligible for the CSEF unless they also comply with the above.

### Criteria 2 - Be of school age and attend school in Victoria

For the purposes of CSEF, students may be eligible for assistance if they attend a Victorian registered primary or secondary school. CSEF is not payable to students attending pre-school, kindergarten, home schooled, or TAFE.

### Special Consideration

A special consideration category exists for

- Families on a bridging visa, temporary protection visa, in community detention or are asylum seeker families
- Students in temporary out of home care arrangements, including statutory kinship care

For more information, see <https://www2.education.vic.gov.au/pal/camps-sports-and-excursions-fund/guidance/eligibility>

### Eligibility Date

For concession card holders CSEF eligibility will be subject to the parent/carer concession card being validated successfully with Centrelink on the first day of either term one (30 January 2023) or term two (24 April 2023).

## PAYMENT AMOUNTS

### CSEF payment amount

The CSEF is an annual payment to the school to be used towards camps, sports and/or excursion expenses for the benefit of the eligible student.

- Primary school student rate: \$125 per year.
- Secondary school student rate: \$225 per year.

The CSEF is paid directly to your child's school and will be allocated by the school towards camps, sports and/or excursion costs for your child.

**For ungraded students**, the rate payable is determined by the student's date of birth. For more information, see:

[www.education.vic.gov.au/about/programs/Pages/csef.aspx](http://www.education.vic.gov.au/about/programs/Pages/csef.aspx)

**Year 7 government school students** who are CSEF recipients are also eligible for a uniform voucher. Secondary schools are required to make applications on behalf of parents/carers so please register your interest at the school.

## HOW TO COMPLETE THE APPLICATION FORM

### NOTE: ALL SECTIONS MUST BE COMPLETED BY PARENT/LEGAL GUARDIAN

1. Complete the PARENT/CARER DETAILS section.

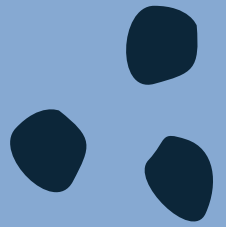
Make sure that the Surname, First Name, and Customer Reference Number (CRN) details match those on your concession card. You will also need to provide your concession card to the school.

If you are claiming as a temporary Foster Parent or a Veteran Affairs Pensioner, you will need to provide a copy of documentation confirming your status as a temporary Foster Parent or provide your Veterans Affairs Pensioner Gold card to the school.

If you are seeking special consideration, mark this in the form and provide a copy of the relevant documentation.

2. Complete the STUDENT/S DETAILS section for students at this school.
3. Sign and date the form and return it to the school office as soon as possible. The CSEF program for 2023 closes on the 23 June 2023.





# WHITTLESEA COMMUNITY NEWS



# HUME

# EAGLES

## Rugby League

**NOT JUST A CLUB BUT A FAMILY. A CLUB BUILT FROM PASSION!**

Contact and non contact teams available

**NO** experience necessary

Our season runs from April - August. Hume Eagles are apart of the Storm Junior League and play against all clubs across metro Melbourne. Our training nights are held on **Tuesday** and **Thursday** nights from **6pm-7pm**. Our club is growing fast but we still have plenty of room for more boys and girls of all ages and abilities all are welcome.

**JOIN NOW**



REGISTER AT [PLAYRUGBYLEAUGE.COM](http://PLAYRUGBYLEAUGE.COM)

Contact us on: 0421 167 722

follow us on instagram and Facebook

Hume Eagles Rugby League Club

Hothlyn Drive Reserve, Craigieburn





# BORN READY

LIVE IN MELBOURNE

sat  
april **29**

**FESTIVAL HALL**

300 DUDLEY ST, WEST MELBOURNE  
VIC 3003

BOOK YOUR  
SEATS NOW

**DRYTICKETS**

Your Online Event Ticket Provider

Special discounts for School Families

FOR SPONSORSHIPS & MORE INFO

SHARON RAI 0405 007 786



Register Via  
The QR Code.



Join Us For Our

# Twilight Tours

MONDAY 1st MAY 2023

Tours 5:30

Q&A 6:30

*Every story will be different  
but, every story will be great!*



**WOLLERT**  
SECONDARY COLLEGE

222 Highpark Drive Wollert  
8407 8888



# SoccaJoeys Holiday Camp



Friday, 14th April  
10AM - 3PM



**TRAC** Thomastown  
Recreation & Aquatic  
Centre, VIC 3074

SoccaJoeys Holiday Program teaches your child valuable skills for life while having fun in a safe and nurturing environment. Led by qualified SoccaJoeys coaches, the program includes soccer games, skill sessions drills, soccer tennis, soccer golf, and much more fun activities with the ball!

Call or email John to register:  
**0403 613 095 | [melbournenorth@soccajoeys.com](mailto:melbournenorth@soccajoeys.com)**

**\$70**



# big

CHILDCARE



## WHAT'S BEEN HAPPENING AT

# O.S.H.C?

- About Our Prep VIP Program
- Children are valued and respected as individuals and central to our programs. The programs we offer are developed in conjunction with educators, schools, the community, children, and families. They are critically reflected upon and evaluated to ensure we are providing positive experiences that are age-appropriate and extend every child.



## HOLIDAY CARE



- From visits to the Melbourne Star, Adventure Park or to see Disney on Ice, to in-house days where children meet AFL stars, cook feasts or make movies; our choices are second to none! Our passion is in creating happy memories for children. Holiday Care with Big Childcare is known as being exceptional! We offer variety in our experiences, where children get to vote on where they want to go.... after all, It is their holidays!
- Vacation care bookings can be made via the Big Childcare website once a Xap enrolment has been complete this can also be done via our website.
- AUTUMN HOLIDAY BROCHURE COMING SOON.....

Enroll your child on Xap NOW





# EASTER FEST



WEEK 1: 10 Apr 23 - 14 Apr '23

WEEK 2: 17 Apr 23 - 21 Apr '23



## NO SIGNAL

MON 10 APR | PUBLIC HOLIDAY



Big Childcare is offline today due to the public holiday. We're going to recharge, and we hope you get the chance to do the same with your family too, as 2023 is going to be a BIG year!



## EGGSTREME

TUE 11 APR | EGGSTREME \$70



It's Easter time, so that can only mean one thing... Eggstreme fun! You can expect egg decoration, Easter themed games and of course a BIG easter egg hunt! So get Egg-cited for a day of chocolate fun!



WED 12 APR | FLIP OUT \$70 + \$35



We're off to climb, jump, grab and go at this incredible indoor play centre! Can you jump higher than your friends? Or will you make it across the Ninja warrior course? We'll see you at the top!



THU 13 APR | LEGO MASTERS \$70



You've seen the TV show, now it's over to you to become a true Lego Master! We'll learn about lego, and even watch some of the masters to inspire our BIG Lego challenge, will you win the title of master builder?



FRI 14 APR | MINI GOLF \$70 + \$30



Take a swing and putt for glory on this amazing themed golfing adventure! Whether you're a pro or beginner, anything can happen on this crazy course, this day out is always a 'hit' so we'll see you on the green!



MON 17 APR | HEALESVILLE SANCTUARY \$70 + \$35



On this day out, you have the chance to meet and get up close and personal with a whole range of Australian animals, from Dingos and Koalas to Kangaroos and Wombats. It's sure to be a 'wild' day out!



## AT THE MOVIES

TUE 18 APR | MOVIES \$70 + \$30



Settle in the corns a poppin', the movies where the bus is stoppin'! The lights are dimmed, and the screen is set for a fun for all ages movie. Check with your centre manager to see what we'll be watching today



## Nailed It!

WED 19 APR | NAILED IT BAKE OFF \$70



It's time to get messy baking cakes! Sprinkles and icing galore! We'll be creating our own version of the TV show 'Nailed it'. See if you can bake the crazy cake creations and of course you get to take part in the taste test too!



THU 20 APR | LUNA PARK \$70 + \$45



It's our annual BIG day out to Luna park, and we have the whole park to ourselves! Ride the Scenic Railway, face the Twin Dragons or for the smaller ones hop on the carousel. Luna Park is always a favourite for everyone!



FRI 21 APR | DISNEY PJ PARTY \$70



Roll out of bed and rock up to Big Childcare, we're having fun in our PJ wear! This fun-filled slumber party is always a favourite with dance parties, competitions, party games and a chill out movie session too everything disney!

# EASTER FEST

Tue 11 Apr '23 - Fri 21 Apr '23  
6:30am to 6:30pm  
No care provided on public holidays and weekends.

## Edgars Creek Primary School

School Address: 45 Macedon Parade Wollert, 3750  
Centre Mobile: 0431 151 651 Centre Email: Edgarscreek@bigchildcare.com

Our school holiday programs are based on the children's interests. We predominantly travel by bus to our On Tour locations and do our best to meet all the needs of the children.

## HOW TO ATTEND?

1.

**ENROLLED?**

Is your child currently enrolled at Big Childcare?

NO YES

**ENROL NOW!**

ENROL

OR

a) Scan or click QR code to Enrol online (best option)

OR

b) Contact your Centre Manager via email, mobile or in person at our centre. See contact details above.

2.

**BOOK**

how to book?

**BOOK NOW!**

BOOK NOW

OR

a) Complete the booking form at the end of this brochure and submit it to our centre in person or by email.

OR

b) Scan or click on QR code to book online

Availability for some On Tour activities are strictly limited. Please book as soon as possible to secure your child's place and avoid disappointment.

3.

**APPLY FOR CCS**

Your cost of care may be reduced by up to 85% if you are eligible.

Scan QR code or call Services Australia on 13 61 50 between 9am and 5pm (local time) weekdays to apply or to find out more.

OR

Scan or click on QR code to find out how much CCS you can get.

\*CCS = Childcare Subsidy

### CCS ESTIMATE GUIDE

- CHILDCARE SUBSIDY -

FULL FEE	AT 85% CCS	PAY AS LOW AS
\$70	\$14	

Scan or click on QR code to find out how much CCS you can get.

## PROGRAM & PAYMENT DATES

\*Payments will be direct debited

## 2023 AUTUMN HOLIDAY CARE BOOKING FORM

### EDGARS CREEK PRIMARY SCHOOL

Address: 45 Macedon Parade, Wollert 3750  
School Centre Contact: 0431 151 651 Centre Email: Edgarscreek@bigchildcare.com

Please complete this booking form and submit it to our centre in person or by email.

**1. ENROLMENT STATUS** - Does your child attend a Big Childcare Service? Please tick the appropriate box.

Yes  Proceed to section 2      No  Scan or click on QR code to enrol online now. You must be enrolled for your booking to be accepted.

**2. CHILD/REN ATTENDING**

	First Name	Last Name
CHILD #1		
CHILD #2		
CHILD #3		
CHILD #4		

**3. DAY(S) ATTENDING** - Please tick the corresponding checkbox for each child attending

CHILD #1	CHILD #2	CHILD #3	CHILD #4	Date	Program	Type	Base Fee	*Activity Fee
<b>WEEK 1</b>								
<input type="checkbox"/>	<input type="checkbox"/>	<input type="checkbox"/>	<input type="checkbox"/>	Monday 10 April	NO SIGNAL PUBLIC HOLIDAY			
<input type="checkbox"/>	<input type="checkbox"/>	<input type="checkbox"/>	<input type="checkbox"/>	Tuesday 11 April	Eggstreme 45 Macedon Parade, Wollert 3750		\$70	
<input type="checkbox"/>	<input type="checkbox"/>	<input type="checkbox"/>	<input type="checkbox"/>	Wednesday 12 April	Flip Out 2/21 Elgar Rd, Derrimut VIC 3026		\$70	+\$35
<input type="checkbox"/>	<input type="checkbox"/>	<input type="checkbox"/>	<input type="checkbox"/>	Thursday 13 April	Lego Masters 45 Macedon Parade, Wollert 3750		\$70	
<input type="checkbox"/>	<input type="checkbox"/>	<input type="checkbox"/>	<input type="checkbox"/>	Friday 14 April	Mini Golf 906 Plenty Rd, Bundoora VIC 3083		\$70	+\$30
<b>WEEK 2</b>								
<input type="checkbox"/>	<input type="checkbox"/>	<input type="checkbox"/>	<input type="checkbox"/>	Monday 17 April	Healesville Sanctuary Glen Eadie Ave, Healesville VIC 3777		\$70	+\$35
<input type="checkbox"/>	<input type="checkbox"/>	<input type="checkbox"/>	<input type="checkbox"/>	Tuesday 18 April	Movies 415 McDonalds Rd, Mill Park VIC 3082		\$70	+\$30
<input type="checkbox"/>	<input type="checkbox"/>	<input type="checkbox"/>	<input type="checkbox"/>	Wednesday 19 April	Nailed It Bake Off 45 Macedon Parade, Wollert 3750		\$70	
<input type="checkbox"/>	<input type="checkbox"/>	<input type="checkbox"/>	<input type="checkbox"/>	Thursday 20 April	Luna Park 18 Lower Esplanade, St Kilda VIC 3182		\$70	+\$45
<input type="checkbox"/>	<input type="checkbox"/>	<input type="checkbox"/>	<input type="checkbox"/>	Friday 21 April	Disney Pj Party 45 Macedon Parade, Wollert 3750		\$70	

## HOLIDAY PROGRAM PREPARATION GUIDE

# Activities

**ON-TOUR ACTIVITIES** will depart at approximately 8.30am unless otherwise specified.

**What to wear?**  
Children are encouraged to wear comfortable, weather appropriate clothing, with closed toe shoes.

**Safety attire**  
Every child is provided with a bright coloured Big Childcare vest with centre contact details attached. For water events, every child is provided with a Big Childcare rashie for protection and safety.

**What to pack?**  
Backpack, lunch, morning and afternoon tea, water bottle, hat, sunscreen, change of clothes. For water events, bring bathers, towel, plastic bag and change of clothes.

**What NOT to pack?**  
We strongly encourage children to leave valuables at home as Big Childcare that will not be responsible for any loss or damage. We kindly ask that you do not provide your children with spending money.

**Disclaimer**  
Excursion locations may be subject to change. You will be notified via email or text when this happens.

### SUPER INCURSIONS AND HOME-BASED ACTIVITIES:

You can arrive at any time within our opening hours during a Home Base day, or before a Super Incursion activity begins. Super Incursions are hosted by an external group, or involve resources booked for a specific experience. Themes can range from Build a Bear, Petting Zoo, Mobile Arcade, Cooking Class, Colour Run etc... You will be updated on any special items to bring on these days. Home Base days are hosted by the centre and include a variety of fun themes of current interest to children. There is no additional cost on a Home Base day.

## Booking Changes

**Changes**  
If making a change to your booking you will need to do this by **Wednesday 5 April 2023**.

**Cancellations**  
Cancellations are not permitted during school holiday program. Amendments to bookings will need to be made prior to the holiday program starting.

**Refunds**  
No cancellations or refunds are permitted during holiday care as staff, resources and/or venues and transportation have been secured based on your confirmed booking.

## Health & Safety

**Medical Plan**  
If your child has a medical condition, you will need to provide medication(s) along with the relevant completed action plan before your child can attend. Medication must be in the original packaging, clearly labelled with the child's name. The packaging must also clearly state the dosage and be within the expiry date. Additionally, you must complete a medication consent form filled out at our centre. Please note that without clearly labelled medication and consent form, children will be unable to attend the holiday program. Please allow time to process this when enrolling and booking.

**COVID-19 Safe**  
Our service follows the advice mandated by the Department of Health and Department of Education. Our COVID-19 Safe Plan is available to view at the service.

## 2023 AUTUMN HOLIDAY CARE BOOKING FORM

### EDGARS CREEK PRIMARY SCHOOL

Address: 45 Macedon Parade, Wollert 3750  
School Centre Contact: 0431 151 651 Centre Email: Edgarscreek@bigchildcare.com

**PARENT CONTACT**

First name:	Surname:
Best contact number: [ ] personal [ ] home [ ] work	Secondary contact number: [ ] personal [ ] home [ ] work
Enrolment Email Address: <i>If you have not enrolled, please enter the email that you will be using to enrol. Your booking confirmation and statements will be sent to this email.</i>	

By signing below, I acknowledge that I have completely read and fully understood the following terms & conditions:

- I have a current / I have attached a copy of the Big Childcare enrolment form (in addition to the holiday booking form) and understand that my child cannot attend, unless all the details in this form have been completed.
- I acknowledge that if my child is prescribed with any medication to be administered at the service, that it is provided to staff before attendance, along with medical action plan, medication consent form and the risk minimisation and communication plans; completed in consultation with the centre manager.
- I understand that full payment on statements emailed to me upon the conclusion of each week's Holiday Program will be payable in arrears the following Monday.
- I understand there will be no refunds once my booking has been accepted and confirmed.
- I am aware that 'On Tour' and 'Super Incursions' will be an additional cost to the Home Base Price, as outlined in the brochure.
- I give permission for my child/ren to be taken outside of the education and care service for all 'On Tour' activities I have authorised them to attend. Big Childcare determines means of travel; this predominantly is bus travel, seatbelts will be provided and required to wear as per jurisdictional regulation.
- I acknowledge the ratio of 1 educator to 15 children. I understand approximately 30 children attending the excursions there will be a minimum of 2 educators.
- Proposed time away from the service will vary and is approximately between the hours of 8.30am to 3pm. Exact excursion departure and return times will be communicated closer to the excursion date.
- Risk assessments have been prepared in accordance with regulation 101 and I am aware they are available to view at the service.
- I understand that further information regarding the description of the proposed destinations and/or activities to be undertaken are available in the holiday program brochure. I understand that risk assessments including but limited to 'On Tour' venues can be found on the parent table at the centre.
- I am aware that children are not allowed to make any purchases whilst on any excursion. I will not provide my child/ren with extra money to spend unless specified by management.
- I understand my contact details may be provided to 'On Tour' venues in accordance with contact tracing, Services Victoria sign into venues and the Department of Health.
- I am aware that extra bookings can be made during the school holiday program, subject to availability.
- I have read and agreed to further terms and conditions outlined in bigchildcare.com/terms-conditions
- I am aware that excursion locations and/ proposed activities may be subject to change, and I will be notified via email/text when this happens.

Parent / authorised guardian signature: \_\_\_\_\_ Date: \_\_\_\_\_

**Disclaimer:** In order for bookings to be confirmed, you **MUST**

1. be enrolled with Big Childcare,
2. received booking confirmation from the centre manager
3. by filling out this document or submitting a booking for school holidays via XAP Online, you agree to the terms and conditions displayed in the brochure, and acknowledge the individual excursion authorisations for your service.

If you currently have not enrolled Scan or click on QR code.

**OFFICE USE ONLY**

Entered by: \_\_\_\_\_ Date: \_\_\_\_\_

**big** Creating **FUN** memories for your kids since 2009

**big** Entered by: \_\_\_\_\_ Date: \_\_\_\_\_



# COULD YOU FOSTER A CHILD?

We **URGENTLY** need **Foster Carers**  
**in your area.** Enquire now on how  
you can help change a child's life.

**CanFoster.com.au | 1800 932 273**



**Apply  
now!**

# Make a difference in your community.

**School Crossing Supervisor positions now available.  
Enjoy the benefits of permanent part-time work!**

There are so many great reasons to join the City of Whittlesea team as a Crossing Supervisor:

- Starting hourly rate of \$31.96 (work 40 weeks but be paid for 52 weeks a year)
- Work 15 hours per fortnight during school terms (Annualised salary paid 12.6hrs per fortnight)
- Paid public holidays that fall during school terms
- 10.5% superannuation (updated from 1/7/2022)
- Pro-rata sick leave
- Receive on-the-job training and uniform is provided
- Reduced price memberships available at Mill Park Leisure and Thomastown Recreation & Aquatic Centre
- Join the City of Whittlesea's active social club and attend organised events
- Health & Wellbeing Programs available



**TO APPLY** visit the City of Whittlesea website at [www.whittlesea.vic.gov.au/schoolcrossings](http://www.whittlesea.vic.gov.au/schoolcrossings)

**For further information** please contact the School Crossing Team on 9217 2508 or email [school.crossing@whittlesea.vic.gov.au](mailto:school.crossing@whittlesea.vic.gov.au)

# Apply to become a School Crossing Supervisor

Join the City of Whittlesea and make a difference in our community!

This very rewarding role helps the most vulnerable members of the community, our children. Assist school aged children and other pedestrians to cross the road at designated school crossings.

## ABOUT YOU

To be considered for this job you need to:

- be medically fit
- have your own transport
- be of good character
- relate well to children and be able to talk to children's parents and teachers
- be available to work for 1.5 hours per day, generally between 8am-9am and 3pm-4pm on weekdays during school terms
- be able to obtain and retain a Working with Children Check (WWCC)
- be fully vaccinated against COVID-19

**If this sounds like you, then you should definitely apply! Complete the application form below or online at [www.whittlesea.vic.gov.au/schoolcrossings](http://www.whittlesea.vic.gov.au/schoolcrossings)**



Please send your completed form to: City of Whittlesea, Locked Bag 1, Bundoora MDC VIC 3083

**Name:** \_\_\_\_\_

**Address:** \_\_\_\_\_

**Phone:** \_\_\_\_\_ **Mobile:** \_\_\_\_\_

**Email address:** \_\_\_\_\_

**Do you have any experience working with children?** If yes, please provide details:

\_\_\_\_\_  
\_\_\_\_\_

**Why do you want to work as a school crossing supervisor?**

\_\_\_\_\_  
\_\_\_\_\_

**What do you know about being a school crossing supervisor?**

\_\_\_\_\_  
\_\_\_\_\_

**Referees:** Please provide the names and phone numbers of two (2) referees (cannot be family or friends). Please state briefly, the relationship with each referee (for example, your last employer, a supervisor, involvement in a community group, voluntary work, etc).

**Name:** \_\_\_\_\_ **Name:** \_\_\_\_\_

**Phone:** \_\_\_\_\_ **Phone:** \_\_\_\_\_

**Relationship:** \_\_\_\_\_ **Relationship:** \_\_\_\_\_



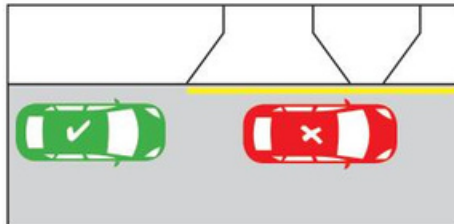
# PARKING AND SAFETY AROUND SCHOOLS

## Speed



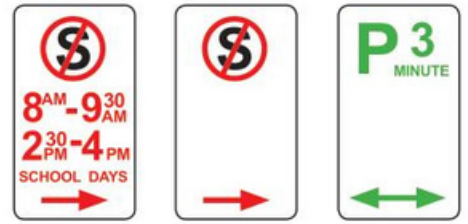
Look out for the reduced speed limit around schools and slow down to improve safety.

## Yellow edge line



A driver must not stop on the side of a road marked with a yellow edge line.

## Parking/Stopping signage



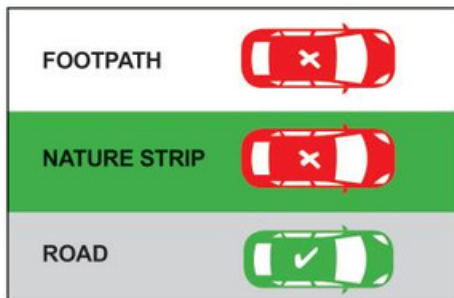
No stopping areas must be kept clear. If times/days are specified, restrictions are only applicable to the specified times/days. You cannot park in a P3 minute area for longer than three minutes.

## School crossings



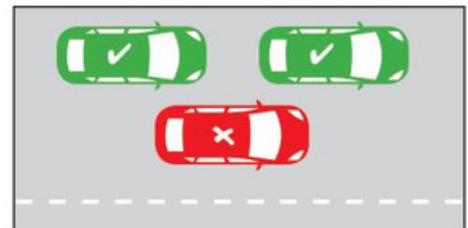
- Look out for flags and Crossing Supervisors
- You must stop for anyone waiting to cross, or who has started crossing
- Please remain stopped until the crossing is clear.

## No parking on nature strips/footpaths



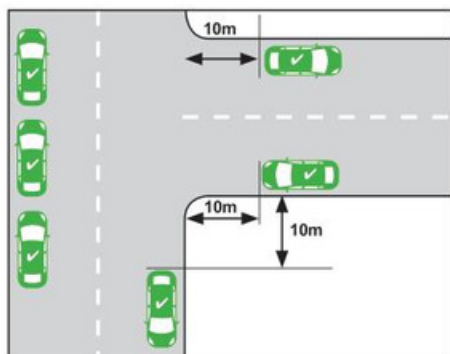
Parking is illegal on nature strips and footpaths.

## Double parking



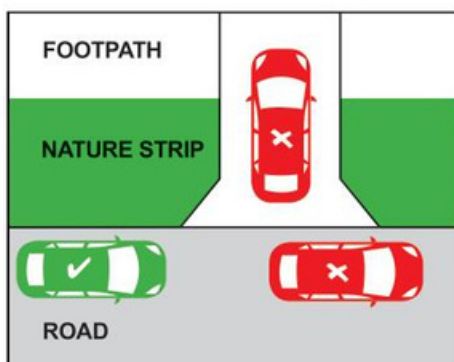
It is illegal to double park at any time. This affects the flow of traffic.

## Within 10 metres of an intersection



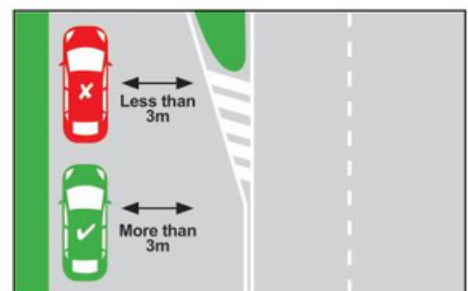
A driver must not stop with any part of their vehicle within 10 metres of an intersection unless signed otherwise.

## Stopping across driveways



It is illegal to, stop/park across a driveway unless you stay in the car are there for no more than two minutes and move immediately if required to do so to allow entry or exit by the owner/occupier.

## 3 metre gap for signage



At least 3 metres must be left between your vehicle and the centre dividing line to allow other vehicles to pass safely and not obstruct traffic.

## What can you do to stay safe

- Supervise your children in or near traffic
- Walk or cycle to school with your child
- Respect all road rules, parking signs and instructions from authorities
- Wait on the same side of the street as your child
- Always let your child out of the kerb side of the car.

## Free Telephone Interpreter Service

العربية	9679 9871	Italiano	9679 9874	ਪੰਜਾਬੀ	9679 9879	Tiếng Việt	9679 9878
Ελληνικά	9679 9873	Македонски	9679 9875	தமிழ்	9679 9879	Other	9679 9879
हिंदी	9679 9879	简体中文	9679 9857	Türkçe	9679 9877		

# Grandmothers & Senior Women Morning Tea

Please bring your friends and share some tea and conversation!



29 March 10 am - 12 pm  
5 April 10 am - 12 pm  
12 April 10 am - 12 pm  
19 April 10 am - 12 pm



**Ganbu Gulinj  
Community Centre**  
55 Macedon Parade  
Wollert 3750

Добредојдовте.

أهلاً وسهلاً

Everybody is welcome!

स्वागत है

ਸੁਆਗਤ ਹੈ

خوش آمدید



**City of  
Whittlesea**

For more information call 03 9217 2170, select Community Facilities option, and ask for Tejal