

# School Newsletter

Thursday 9th February 2023



**EDGARS CREEK  
PRIMARY SCHOOL**

**Ph:** 9407 7100 **Web:** <https://edgarscreekps.vic.edu.au>

**Email:** [edgars.creek.ps@education.vic.gov.au](mailto:edgars.creek.ps@education.vic.gov.au)

**RESPECT    RESPONSIBILITY    COURAGE    CURIOSITY**

## LOOK AT WHAT YOUR SCHOOL CONTRIBUTIONS PAY FOR!!!

We are delighted to be able to provide our students with more playground facilities. This is thanks to families who paid their parent contributions in 2022. The playground provides additional opportunities for the large number of young students we have across Prep-Year2.

We now want to install a shade sail over this new playground space. Please support our fundraising raffles so we have the funds to do so.

Our grounds are very large and we have been struggling to keep up with the mowing and maintenance they need. While we get some money from the government for this, it has not been enough to employ a regular maintenance person. We have been able to save some money from parent contributions in 2022 to help pay for this. Paul is our new maintenance worker and is currently working part time for us. School Council is hoping to be able to increase this to full time later this year from funds provided from this year's parent contributions.



## IMPORTANT DATES

**Friday 10th February**  
5/6 Interschool Sports

**Tuesday 28th February &  
Wednesday 1st of March**  
Meet the Teacher  
Appointments

**Monday 13th March**  
Labor Day Public Holiday

**Thursday 6th April**  
Last day of school

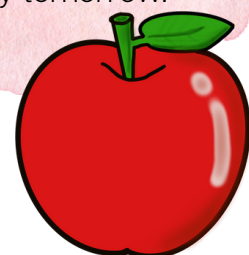


HI My name is Paul, you may see me around the school fixing things. I'm friendly and love seeing all the kids playing and having fun. You can always come say hi to me anytime.



### Newsletter Challenge

How many Apples can you find? Write your answer and put it in the challenge box in the office. Winners drawn at assembly tomorrow.



*Learning together for success.*

## Child Safe Standards

At Edgars Creek Primary School, we are committed to providing a child safe environment where children and young people are safe and feel safe, and their voices are heard about decisions that affect their lives. Our child safe policies, procedures, strategies and practices will be inclusive of the needs of all children, particularly Aboriginal and Torres Strait Islander children, children from culturally and linguistically diverse backgrounds, children with disabilities, and children who are vulnerable.

Edgars Creek Primary School has zero tolerance for child abuse.

### OUR 2023 SCHOOL MANTRA

Each year we develop an ECPS School Mantra which guides our work for that year. In our first year, 2021, it was Bringing Everyone Together, in 2022 it was Growing Stronger Together.

For 2023 our school mantra is:

## Unity Strengthens Community

This was developed by our staff and Year 6 students. We look forward to putting it into action.

## OUR SCHOOL VALUES



Our four school values guide the way we act and support the culture of Edgars Creek Primary School. You will notice our values on display throughout our school and our staff, students, families and visitors are expected to live these values. We will continually work with our students, staff and school community to identify what these values represent and the specific ways we can demonstrate these values in 2023.

## Zooper Doopers and Pop Corn FOR SALE

We are continuing to sell sugar free Zooper Doopers and Popcorn this year.

These will be sold daily for Years 1-6. Sales for Preps will begin next week.

Zooper Doopers and Popcorn are sold for \$1 each



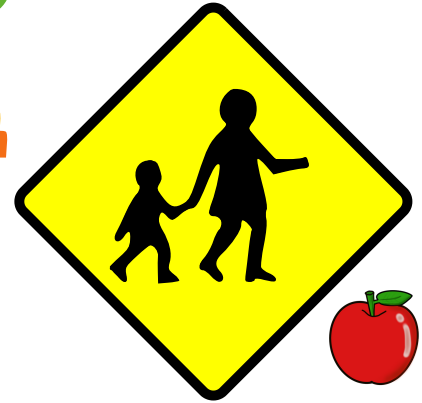
## CSEF 2023

We encourage all families to read the attached information regarding their eligibility for additional funding under the Camps, Sports and Excursion Fund (CSEF). If you have any questions regarding this, please contact our School Office.



*Learning together for success.* 

# SOME GENERAL REMINDERS



**HATS** - All students need an Edgars Creek Primary School hat which they must wear during all outside play breaks. Students without a hat will only be able to play in shaded spaces as of next week. Hats will be for sale at the School Office sometime next week. Please watch COMPASS for this announcement. These are available from PSW South Morang and also available from our School Office for \$18.95 Please put your child's name on this as they are often misplaced. Students who do not have a hat will be required to remain in the shade and this limits their ability to play.

**SCHOOL UNIFORM** - Please ensure your child is wearing their sport uniform (polo) on their PE day and on Fridays only. They must wear the Summer/Winter (checked shirt or dress, school jumper or jacket) on the other 3 days of the week.

**TRAFFIC ISSUES** - Road Safety is vital for the wellbeing of our whole community. There are 3 school crossings in Macedon Parade which have a crossing supervisor. These operate from 8.20am onwards in the mornings and until 3.40pm in the afternoons. Please use these. Do not double park or speed when driving around the school and please ensure children are leaving the car on the kerbside. We realise Macedon Parade is crowded and narrow. Please ensure you are being safe and following the parking restrictions.

**COMPASS** - It is very important that you activate COMPASS to access all of the school communication. Compass is the main form of communication between the school and families. Many reminders and other information are sent using this system. Please see the School Office if you are having any difficulties.

---

*Learning together for success.*

# MEET THE ADMIN TEAM FOR 2023



Hello everyone, my name is Grace and am very excited to be back at ECPS for our third year (can't believe how quickly the first two years have passed). The friendly, welcoming staff and beautiful families here at ECPS make it a wonderful place to work. When I am not at work I love spending time with my grandbabies, Elijah (4 years old) and Frankie (2 years old), and my fur grandbabies, Honey (1 year old) and Bailey (8 months old). My favourite place to holiday is down by the beach at Phillip Island. I am looking forward to sharing another fabulous year with you all in 2023.

Hi, my name is Alessia and I am the Enrolment Officer here at Edgars Creeks Primary School. I am thrilled to be a part of the Administration Team for a second year. When I'm not working, you can find me at the beach or enjoying time with family and friends. I love to take my fur-baby, Honey, for walks. We love the outdoors. Please don't hesitate to pop in to the office and say hello, especially if you need some assistance.



Hi my name is Jess. I love working at ECPS and feel lucky I get to see all your happy faces. I love spending time with my kids and going on waterslides on hot summers days. I have a dog named Kyro who loves food and going for walks. We hope you have the best year and if you need anything please don't hesitate to come see us in the office

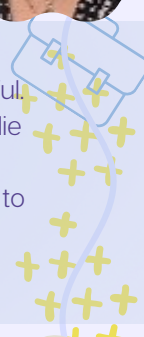


Hi my name is Nina, I love working at ECPS and love seeing how excited you all are to come to school every day. I love spending time with my family, I enjoy gardening and really love to read. I am really looking forward to meeting you all throughout the year and I hope you all have a fantastic year at ECPS!



Hello, my name is Rosita and I feel so lucky to have been given the opportunity to work as an admin support for ECPS. I love the working environment and the team is great and very helpful. In my spare time I love to spend time with my family, I have two dogs named Bonnie and Mollie which love to go for long walks and play.

We hope you have a great year and if you need anything or have any questions we are here to help, please don't hesitate to come and see us in the office.



Hi, my name is Leah. I'm mum to two girls, both are in high school with my eldest in Year 12. I love to travel, spend time with family and friends and surprisingly, I love to garden. I've been working at ECPS for over a year now in the front office. It has been so lovely to meet and work with the whole school community during this time. A warm welcome to all the new families and staff this year, I'm looking forward to meeting you all in 2023.





EDGARS CREEK  
PRIMARY SCHOOL

# PRE-LOVED UNIFORM DONATION



We are looking for any reusable school uniform donations.

(These can be jackets, dresses, pants, skorts, etc.)

Whether your child has outgrown their uniform as they prepare to return to school, or simply no longer needs them, we will be happy to take them off your hands!



**Please drop any uniform donations into Main Reception, or Student Reception.**





# 1E News



## Routines

In 1E we are working on developing our morning and afternoon routines. We are becoming experts at unpacking and packing our bags!

## 1E has rights and responsibilities

In 1E, we know we have the right to be safe and the right to be a learner. We have been practising inside and outside the learning space.



## Choosing a good-fit book!

This week in Reading, we are learning how to choose a good-fit book. We know that we need to choose a book that we can read but also might challenge us a little bit.

Once we've chosen our good-fit book, we are learning how to choose a good spot to read. Sitting on a bean bag, floor or chair and quietly reading is the best choice!



## Timetable

1E has:  
Visual Arts on Wednesday  
Digi Tech on Wednesday (bring iPads!)  
PE on Thursday (Sports uniform)  
Spanish and Science on Friday





**connect. reflect. protect.**

**I'm in for Safer Internet Day!**

**7 February 2023**

Have you read ECPS's Digital Technologies and BYOD Program Agreement on Compass?



If not, please make sure you tick the box on Compass to agree to our school policy and show you are supporting your children to be safe online!

ICT Policy

This is the ICT Policy.  
Please agree to prevent cyberbullying, etc.  
Find out more here.

Parent agreement - Ms Terri TOWEL \*

I have read and accept the agreement above

Previous Agreement 1 of 2 Save & close Continue >

# 2023 Photo Day

## Online Order Instructions

Dear Parents and Students,

### Edgars Creek Primary School PHOTO DAY IS 16-05-2023

Your school prefers orders to be placed online.

However, if unable to order online, please complete your order using the Envelope at your school office. It is important that the order instructions (below) are followed.

**\*\* IMPORTANT PLEASE NOTE – ONLINE ORDERING FOR SIBLING PHOTOS WILL CUT OFF ON 15-05-2023 \*\***

**ONLINE ORDERING** Your child's school photos are now available for secure online purchase, please note if you are ordering online, you do not need to return an envelope to the school

#### 4 EASY STEPS TO ONLINE SCHOOL PHOTO ORDERING

Step 1 [Click Here](#). - For online ordering process for your school.

- OR - Go to [www.advancedlife.com.au](http://www.advancedlife.com.au) before photo day and enter your school code [E3J TF4 MH4]

Step 2: Enter your student's details

Step 3: Choose the package that best suits your needs (all orders will be returned to the school for collection)

Step 4: Pay for the photos via the shopping cart (upper right corner of the page)

**\*\*Online Orders have a 1.5% merchant fee applied when using Visa, Mastercard or PayPal.**

Please Note: If you miss photo day, portrait and group packages can still be ordered online for 7 days afterwards with no late fees. After that time, late orders will require separate processing and handling and therefore will incur a \$15 late fee per package.

**FAMILY / SIBLING PHOTOS** No envelope required if ordering online

#### 3 EASY STEPS TO ONLINE SCHOOL PHOTO ORDERING

- Go to [www.advancedlife.com.au](http://www.advancedlife.com.au) before photo day and enter your school code [E3J TF4 MH4]
- Family/Sibling photo orders online close on [15/05/2023]
- Orders can be placed by returning an envelope up until photo day with exact cash amount.

#### ORDERING USING AN ENVELOPE

##### PLEASE SEE THE SCHOOL OFFICE TO RECEIVE ONE AND RETURN ON PHOTO DAY ONLY

Step 1: Student Details: Complete the student details section on the front of the order envelope.

Please use black or blue pen.

Step 2: Purchase Details: Complete the purchase details on the front of the envelope.

Step 3: Payment Method: Select your payment method.

Credit Card – Online Only at [www.advancedlife.com.au](http://www.advancedlife.com.au)

Cash – Please enclose correct money – as change is not available

Please Note: A portrait and a class group photograph will be taken of every student at the school, regardless of purchase. Photographs of your children taken as part of a class group are only permitted to be distributed within their own class. Your child's name will appear on the class group photo. If you Do Not wish your child to be photographed, please contact your school office with your instructions prior to Photo Day.

Please feel free to contact us via email or phone should you have any queries regarding your child's school photo order.

[info@advancedlifevic.com.au](mailto:info@advancedlifevic.com.au) or 03 9852 1133

Advancedlife Team



**IMPORTANT:** Sibling packages must be ordered before photo day, so your school knows to collect your children on photo day for a sibling photo. Final online orders for siblings close at 12.00 a.m. the night before your school's first photo day. If you miss the order cut off, let your school know you would like a sibling photo taken, collect a sibling envelope from your school and return the completed order envelope (including exact cash payment) directly to our photographers. Sibling photographs are by request and cannot be ordered after photo day. Only siblings attending the school are permitted to be photographed.

## A PACK

DELUXE

### DELUXE PACKAGE \$48.00



203x254mm (10x8")



126x176mm (4)



26x41mm (6)



38x135mm



82x127mm



38x63mm



63x87mm



package includes high res digital portrait image

## B PACK

VALUE

### VALUE PACKAGE \$33.00



203x254mm (10x8")



126x176mm (2)



26x41mm (3)



38x135mm



82x127mm



38x63mm



package includes high res digital portrait image



## C PACK

REGULAR

### REGULAR PACKAGE \$28.00



203x254mm (10x8")



126x176mm (2)



26x41mm (3)



package includes high res digital portrait image



## D PACK

BASIC

### BASIC PACKAGE \$25.00



126x176mm (2)



26x41mm (3)



package includes high res digital portrait image



### E - ENLARGEMENT \$22



203x254mm (10x8")

Option E DOES NOT include a high res digital portrait image



### PERSONALISED MUGS \$20



Available online only



Flyer Code S

## HOW TO ORDER

### OPTION 1 ORDER ONLINE NOW

Online payment options include Visa, Mastercard and PayPal. Alternatively, you can choose to pay over 10 weeks using LatitudePay.

#### STEP 1

Find your school's shared 9 digit community order code on the *advancedlife* order envelope.



#### STEP 2

Go to [www.advancedlife.com.au](http://www.advancedlife.com.au) on your computer, phone or tablet.

Enter your school's 9 digit order code in the 'order & download' box. This will take you to the secure online ordering site for your school.



#### STEP 3

Click on 'Order Photos' and complete your details and choose your package, then follow the payment process. During this process you can place orders for additional children at your school and sibling photos, if available.



### OPTION 2 CASH/ENVELOPE ORDERING

Schools prefer orders placed online. However, if you are unable to order online, please complete your order using the order envelope provided.

#### STEP 1

Complete a separate order envelope for each individual child's package/s ordered. If ordering for more than one child, payment should be enclosed in the envelope of the eldest child and this should be indicated on the envelope of the other child/children (the envelope that does not have cash enclosed).

#### STEP 2

Enclose exact cash payment in one envelope for the package/s you are ordering. Payment for more than one child should be in the eldest child's envelope and marked at the bottom of the envelope in the space provided.

#### STEP 3

Return your completed envelope/s, with correct cash payment, to our photographers on photo day.

**Please note:** You must enclose exact correct payment, as change is not available. Credit card payments can only be made online and we no longer accept cheques. There is a separate envelope for sibling photo orders, should your school choose to offer sibling photos.

## FREQUENTLY ASKED QUESTIONS

### SIBLING PHOTOS

Online orders for siblings close at 12.00 a.m. the night before your school's first photo day. If you miss the order cut off, let your school know you would like a sibling photo taken, collect a sibling envelope from your school and return the completed order envelope (including exact cash payment) directly to our photographers. Sibling photographs are by request and cannot be ordered after photo day.

### ONLINE ORDER RECEIPTS

An order receipt will be emailed to the email address you provide during the ordering process. Please note that orders placed via PayPal can take up to 48 hours for payment to be processed and a receipt sent.

### ARE THERE FEES FOR ORDERING ONLINE?

There are no fees for LatitudePay or envelope ordering. There is a 1.5% merchant fee applied when using Visa, Mastercard or PayPal. For more information go to: [www.advancedlife.com.au/FAQ](http://www.advancedlife.com.au/FAQ)

### CO-PARENTING FAMILIES

If you prefer to personally collect your photographic package from the school office, rather than have it sent home with your child, please select the "Collect Your Pack" option when you order online.

### NOT FOR PUBLICATION STUDENT INFORMATION

If your child's image is "not for publication" and your school is aware of your decision, your child should not be presented to our photographers on photo day and school photographs will not be available for purchase. All students presented to our photographers by your school for a photo on photo day will be photographed, their images will appear in school photography packages and these packages will be available to purchase.

### REFUND POLICY

Check your order carefully, as refunds are not available for incorrect choice. No refunds are available once your portrait image has been downloaded. To find out more, please visit: [www.advancedlife.com.au](http://www.advancedlife.com.au)

### CONTACT US

Contact us at [www.advancedlife.com.au/contact](http://www.advancedlife.com.au/contact)

**advancedlife**  
school photography & print specialists



# Welcoming Wellbeing



## Brain Food and Healthy Eating at School

*It is important that children come to school with brain food, lunch and recess daily. A healthy lunchbox which, includes a healthy lunch and snacks, are important for children and help with concentration and learning. Below are some healthy tips for our children:*



**Snacks are an important part of a healthy diet for active children, so offer nutritious as well as high energy snacks.**

Let children help with food preparation and meal planning.

**It is important to encourage breakfast, because a good night's sleep followed by food in the morning helps your child stay active and concentrate at school**

Limit screen time and aim for some physical activity every day.

***For more information, please see the websites below:***

<https://www.betterhealth.vic.gov.au/health/healthyliving/eating-tips-for-school-children#healthy-tips-for-school-aged-children>

[https://www.eatforhealth.gov.au/sites/default/files/2022-09/n55f\\_children\\_brochure\\_0.pdf](https://www.eatforhealth.gov.au/sites/default/files/2022-09/n55f_children_brochure_0.pdf)

**Children need a variety of different foods each day.** Snacks are an important part of a healthy diet for active children.

**Make snacks nutritious, not just high in energy.** Plan to share meals as a family.

**Enjoy talking and sharing the day's happenings at mealtimes.**

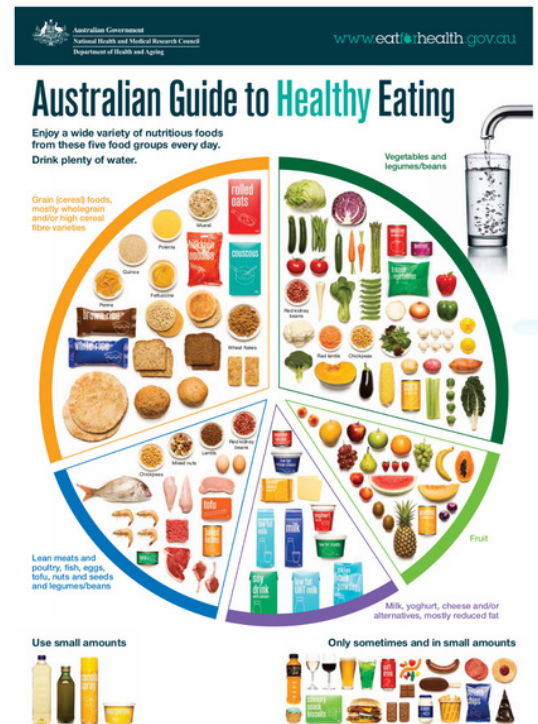
Let children tell you when they're full.

**Give your child lunch to take from home.**

Let children help with food preparation and meal planning.

**Encourage physical activities for the whole family.**

Encourage your child to drink lots of water.



*Learning together for success.*



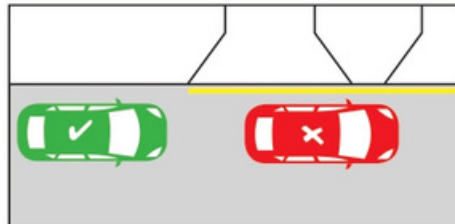
# PARKING AND SAFETY AROUND SCHOOLS

## Speed



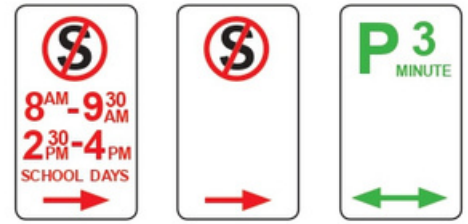
Look out for the reduced speed limit around schools and slow down to improve safety.

## Yellow edge line



A driver must not stop on the side of a road marked with a yellow edge line.

## Parking/Stopping signage



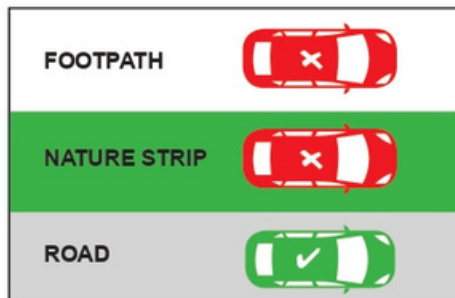
No stopping areas must be kept clear. If times/days are specified, restrictions are only applicable to the specified times/days. You cannot park in a P3 minute area for longer than three minutes.

## School crossings



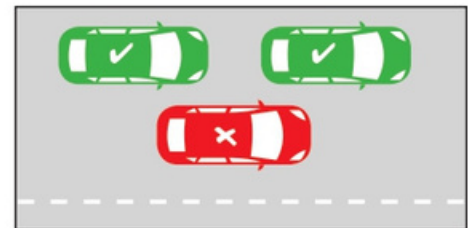
- Look out for flags and Crossing Supervisors
- You must stop for anyone waiting to cross, or who has started crossing
- Please remain stopped until the crossing is clear.

## No parking on nature strips/footpaths



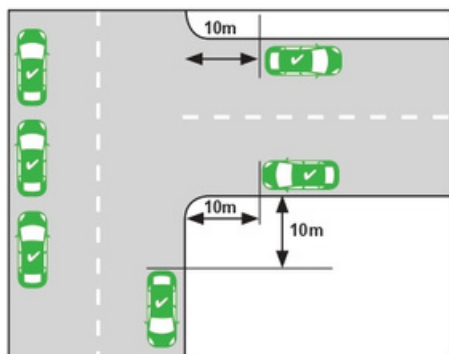
Parking is illegal on nature strips and footpaths.

## Double parking



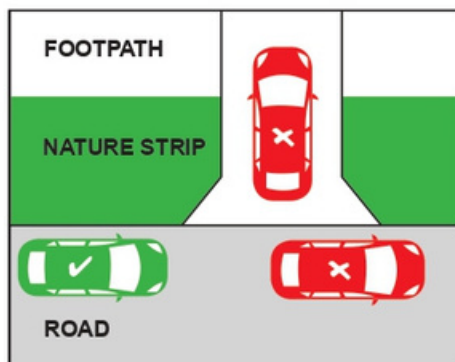
It is illegal to double park at any time. This affects the flow of traffic.

## Within 10 metres of an intersection



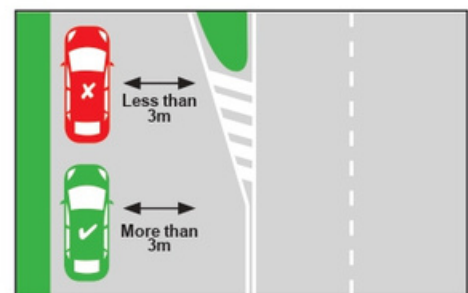
A driver must not stop with any part of their vehicle within 10 metres of an intersection unless signed otherwise.

## Stopping across driveways



It is illegal to, stop/park across a driveway unless you stay in the car are there for no more than two minutes and move immediately if required to do so to allow entry or exit by the owner/occupier.

## 3 metre gap for signage



At least 3 metres must be left between your vehicle and the centre dividing line to allow other vehicles to pass safely and not obstruct traffic.

## What can you do to stay safe

- Supervise your children in or near traffic
- Walk or cycle to school with your child
- Respect all road rules, parking signs and instructions from authorities
- Wait on the same side of the street as your child
- Always let your child out of the kerb side of the car.

### Free Telephone Interpreter Service

العربية	9679 9871	Italiano	9679 9874
Ελληνικά	9679 9873	Македонски	9679 9875
हिंदी	9679 9879	简体中文	9679 9857

ਪੰਜਾਬੀ	9679 9879	Tiếng Việt	9679 9878
தமிழ்	9679 9879	Other	9679 9879
Türkçe	9679 9877		

# Celebrating Our Multicultural School Community



EVERYBODY IS WELCOME AT EDGARS CREEK PRIMARY

At ECPS this year we are celebrating our wonderful and extensive Multicultural community.  
Each week at assembly, we are unveiling a different cultural flag.

This week we are celebrating those in the ECPS Community from

**NETHERLANDS**



# ACADEMIC ACHIEVEMENT EXCELLENCE AND EFFORT

Home Group	Name	Award given...
6A	Harshita	For displaying the school value of Courage by building positive relationships with her Year 6 peers and teachers at ECPS. Well done Harshita!
6B	Ayham	For displaying the school value of Courage during our writing lessons when sharing your work and ideas. Well done, Ayham!
6C	Nakul	For displaying the school value of respect and being a great role model in our sixth grade community. Keep up the great work, Nakul!
5A	Aya	For demonstrating the school value of Courage in the Year 5 Learning Community.
5B	Karan	For starting Year 5 with an energetic jump in her step, and a big smile on her face. Great job Avneet! Keep up the positive mindset.
5C	Kirat	For settling into a new school environment with a positive and enthusiastic attitude. Well done, Kirat!
5D	Stella	For making a great start to Year 5 and showing the school value of Responsibility at all times. Super effort Stella!
4A	Rohan	For demonstrating our school values and creating our Class Mascot. Well done!
4B	Leon	For demonstrating the school value of Responsibility by applying your knowledge of Write to Read spelling rules. Wonderful job, Leon!
4C	Deema	For showing Courage when presenting her My Special Something presentation to our class. Well done!
4D	Vidhi	For consistently displaying our school values and being a terrific role model for our 4D learning community. Excellent effort, Vidhi!
3A	Manan	For demonstrating the school value of Courage during his first week at Edgars Creek Primary School. Well done, keep up the amazing work Manan!
3B	Aya	For being a wonderful role model for the Year 3 Learning community by displaying the school values. Keep up the great work, Aya!
3C	Ariana	For demonstrating the school value of Respect by using manners with her teachers and her peers. Well done, Ariana!
2A	Shayna	For demonstrating all the school values of Respect, Responsibility, Courage and Curiosity in our learning community each day. Well done, Shayna!
2B	Leviticuz	For settling into year 2 with a positive mindset and demonstrating the school values consistently! Keep up the great work!
2C	Aggie	For showing the school value of Courage during Reading and having a go at finding a good fit book using the IPICK strategy. Keep up the amazing work, Aggie!
2D	Elijah	For settling into Year 2 at ECPS with a positive attitude and showing our school value of Courage. Keep up the amazing effort, Elijah!
2E	Eli	For showing our school value of Courage when making new friends and learning about our school. Great work Eli, we are so excited that you're in 2E!
2F	Senasha	For demonstrating the school values of respect and responsibility in our learning space each day. Well done, Senasha! Keep up the great work!



# ACADEMIC ACHIEVEMENT EXCELLENCE AND EFFORT

Home Group	Name	Award given...
1A	Alex	For being an excellent helper in our Learning Community.
1B	Haley	For always showing the school expectation of Being a Learner by working independently to complete all tasks. You are a wonderful role model and should be so proud of your start to Year 1! Well done, Haley!!
1C	Harvin	For showing the school value of Courage and coming to school brave and ready to learn. You are a star Harvin, keep up the great work!
1D	Virat	For demonstrating the school value of Courage when settling into Year 1. Virat, you are always a positive role model to those around you. Keep up the amazing work!
1E	Jesvick	For demonstrating school values and being a super star in 1E! Congratulations on a great start to the year.
1F	Divjot	For consistently demonstrating the school value of Respect and Responsibility by having all your learning materials ready and showing whole body listening. Well done on a great start to Year 1. Keep up the amazing work, Divjot!
PA	Aarannan	For always following instructions and showing the value of respect to his teachers and peers! You have settled into school so well! We are so proud!
PB	Atharva	For showing the school value of Responsibility when helping others and trying his best to demonstrate the Learning Community expectations. Well done on a great start to Prep, Atharva!
PC	Lexie	For displaying the school values of Respect and Courage. Lexie has settled in well to the Prep Learning community. Well done for learning all the routines and structures. I am very proud of you!
PD	Joel	For demonstrating the school value of Courage in his first week at school. Joel has settled in well and follows school routine and structure. Keep up the great work, Joel. You are a star!
PE	Aysha	For demonstrating the school values of Respect and Responsibility in our learning space each day. Keep on being the superstar that you are, I am very proud of you!
PF	Micah	For demonstrating our school values Courage and Respect when entering the learning space in the morning and showing whole body listening. Well done Micah, keep up the great work!
Digital Technologies - Taylah	Isaiah	For a great start to the year in Digital Technologies! Well done for displaying the school value of courage by having a go at all the tasks this week. Keep it up superstar!
Science -Jemma	Andrew - 6A	For showing respect and curiosity in Science lessons each week. Well done, Andrew! Keep up the amazing work!
Performing Arts - Anita	Zaid - 1A	For showing the school value of Curiosity during Performing Arts lessons. It is great to see you so interested in your learning!
Visual Arts-Kristy	Savreet - 6B	For demonstrating our school value of courage and creating some amazing artwork by using your imagination. Well done Savreet! Keep up the good work!
Spanish- Lily	Ariana B - 2C	For showing the school values of courage and respect when greeting teachers in Spanish in the yard. Well done, Ariana!
PE-David	Hayman S - 3C	For demonstrating our schools values of respect and Courage and for being a great role model. Fantastic work!
Digital Technologies- Sue	Shayan - 2A	For demonstrating our school values Courage and Respect in Digi Tech lesson. Keep up the amazing work!
Education Support- Joyce	Mariam - 1D	For showing responsibility and valuing the school by helping your friends keep the playground clean and safe during recess. You are amazing Mariam!



**CAMPS, SPORTS AND EXCURSIONS FUND (CSEF) APPLICATION FORM**

EDGARS CREEK PRIMARY SCHOOL

School Name

015310

School REF ID

**Parent/carer details**

Surname \_\_\_\_\_

First name \_\_\_\_\_

Address \_\_\_\_\_

Town/suburb \_\_\_\_\_ State \_\_\_\_\_ Postcode \_\_\_\_\_

Contact number \_\_\_\_\_

Centrelink pensioner concession **OR** Health care card number (CRN)

-    -    -  **OR**

Foster parent under a temporary care order\* **OR**  Veterans affairs pensioner (Gold Card)\*\*

\*Foster Parents must provide a copy of the temporary care order letter from the Department of Families, Fairness and Housing (DFFH).

\*\*Applicants must provide a copy of the Veteran Affairs Gold card

Is this an application for special consideration (no CRN needed)? Yes  No

**Student details**

Student's surname	Student's first name	Student ID	Date of birth (dd/mm/yyyy)	Year level

I authorise the Department of Education and Training (DET) to use Centrelink Confirmation eServices to perform an enquiry of my Centrelink customer details and concession card status in order to enable the business to determine if I qualify for a concession, rebate or service. I also authorise the Australian Government Department of Families, Fairness and Housing (DFFH) to provide the results of that enquiry to DET.

I understand that:

- DFFH will use information I have provided to DET to confirm my eligibility for the Camps, Sports and Excursions Fund and will disclose to DET personal information including my name, address, payment and concession card type and status.
- this consent, once signed, remains valid while my child is enrolled at a registered Victorian school unless I withdraw it by contacting the school.
- I can obtain proof of my circumstances/details from DFFH and provide it to DET so that my eligibility for the Camps, Sports and Excursions Fund can be determined.
- If I withdraw my consent or do not alternatively provide proof of my circumstances/details, I may not be eligible for the Camps, Sports and Excursions Fund provided by DET.
- Information regarding my eligibility for the Camps, Sports and Excursions Fund may be disclosed to the DFFH and /or State Schools Relief for the purpose of evaluating concession card services or confirming eligibility for assistance.

You are able to request access to the personal information that we hold about you, and to request that any errors be corrected, by contacting your child's school.

Signature of applicant \_\_\_\_\_ Date \_\_\_\_/\_\_\_\_/\_\_\_\_



## CSEF ELIGIBILITY

Below are the criteria used to determine a student's eligibility for the Camps, Sports and Excursions Fund (CSEF).

### Criteria 1 – General eligibility

To be eligible for the fund, a parent or carer of a student attending a registered Government or non-government Victorian primary or secondary school must:

- on the first day of Term one
  - on the first day of Term two
- a) be a holder of one or more of the eligible financially-means tested cards **OR** be a temporary foster parent, and;
- b) submit an application to the school by the due date.

For the list of eligible financially-means tested cards refer to the CSEF Policy:

<https://www2.education.vic.gov.au/pal/camps-sports-and-excursions-fund/policy>

Parents who receive a Carer Allowance on behalf of a child, or any other benefit or allowance not income tested by Centrelink, are not eligible for the CSEF unless they also comply with the above.

### Criteria 2 - Be of school age and attend school in Victoria

For the purposes of CSEF, students may be eligible for assistance if they attend a Victorian registered primary or secondary school. CSEF is not payable to students attending pre-school, kindergarten, home schooled, or TAFE.

### Special Consideration

A special consideration category exists for

- Families on a bridging visa, temporary protection visa, in community detention or are asylum seeker families
- Students in temporary out of home care arrangements, including statutory kinship care

For more information, see <https://www2.education.vic.gov.au/pal/camps-sports-and-excursions-fund/guidance/eligibility>

### Eligibility Date

For concession card holders CSEF eligibility will be subject to the parent/carer concession card being validated successfully with Centrelink on the first day of either term one (30 January 2023) or term two (24 April 2023).

## PAYMENT AMOUNTS

### CSEF payment amount

The CSEF is an annual payment to the school to be used towards camps, sports and/or excursion expenses for the benefit of the eligible student.

- Primary school student rate: \$125 per year.
- Secondary school student rate: \$225 per year.

The CSEF is paid directly to your child's school and will be allocated by the school towards camps, sports and/or excursion costs for your child.

**For ungraded students**, the rate payable is determined by the student's date of birth. For more information, see:

[www.education.vic.gov.au/about/programs/Pages/csef.aspx](http://www.education.vic.gov.au/about/programs/Pages/csef.aspx)

**Year 7 government school students** who are CSEF recipients are also eligible for a uniform voucher. Secondary schools are required to make applications on behalf of parents/carers so please register your interest at the school.

## HOW TO COMPLETE THE APPLICATION FORM

### NOTE: ALL SECTIONS MUST BE COMPLETED BY PARENT/LEGAL GUARDIAN

1. Complete the PARENT/CARER DETAILS section.

Make sure that the Surname, First Name, and Customer Reference Number (CRN) details match those on your concession card. You will also need to provide your concession card to the school.

If you are claiming as a temporary Foster Parent or a Veteran Affairs Pensioner, you will need to provide a copy of documentation confirming your status as a temporary Foster Parent or provide your Veterans Affairs Pensioner Gold card to the school.

If you are seeking special consideration, mark this in the form and provide a copy of the relevant documentation.

2. Complete the STUDENT/S DETAILS section for students at this school.
3. Sign and date the form and return it to the school office as soon as possible. The CSEF program for 2023 closes on the 23 June 2023.



Lunch Mums are an exciting new business to Edgars Creek Primary School.

Lunch Mums are an external business that provides lunch orders to the local Schools. They pride themselves in providing wholesome and tasty lunches to the school community. Their aspirations are not only to offer healthy lunches and treats to children, but to also offer a simple and effective ordering solution to help busy parents, without the worry or fuss.

Lunch orders commenced this week and will be available Thursday's.

Parents/Students will be able to place orders via an online App ["My School Connect"](#). Please refer to the instructions below on how to set up an account and register your child/children.

## Orders must be in by Thursday 8.00am.

ECPS & Lunch Mums look forward to working with the school community in providing school lunches for your children




**STEP 1.**

**Visit My School Connect**  
Visit <http://www.myschoolconnect.com.au> and register as a parent.

**STEP 2.**

**Setup a child**  
Upon first login, setup your child/children.

**STEP 3.**

**Enter student details**  
Don't forget to add in all essential fields; name, school, class and any allergy information.

**STEP 4.**

**Allow your child to order for themselves**  
Setting 'yes' here will allow your child to login online and order.

**PRO-TIP!**  
This is a great way to teach your child to manage their spending and choose healthy food. Remember to always supervise.

**STEP 5.**

**Set a daily spend limit**  
You can either enter a '\$dollar amount' or select 'unlimited'. The daily spend will only apply to your child's account.

**STEP 7.**

**Add funds to your account**  
Visit the *'Top up and financial history'* section to add funds into your account by following the following steps:

**Top up**

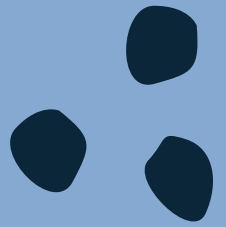
- Select payment type: Bank Account or Credit Card
- Select a \$dollar amount
- Enter payment details

**Auto top up**

- Select payment type: Bank Account or Credit Card
- Add top up parameters; minimum balance & auto top up amount

**Please call the office if you require assistance to set up the app.**

*Learning together for success.*



# WHITTLESEA COMMUNITY NEWS



# SCHOOL HOLIDAY WORKSHOPS!

**bricks  
4 kidz**

We Learn. We Build. We Play.



An EXTRAORDINARY experience for kids!

LEGO-BASED: AFTER SCHOOL CLASSES, BIRTHDAY PARTIES, INCURSIONS, EVENTS, HOLIDAY WORKSHOPS

## SUMMER HOLIDAY WORKSHOPS:

- Christmas BRICK-Tacular!
- Spinning Ninjas (inspired by Ninjago™!)
- Galaxy Far Away (inspired by Star Wars™!)
- Superheroes & Villains (DC & Marvel™!)
- LEGO® Robotics with Coding

*Locations at :*

*Galada Community Centre,  
Epping &  
St. Albans Community Centre,  
St. Albans*

*FOLLOW US ON FACEBOOK  
Bricks 4 Kidz - Northern Suburbs*



**BOOK NOW!**

0439 383 089

iristeska@bricks4kidz.com

www.bricks4kidz.com.au/wts



AGED 10-18? JOIN BASELINE YOUTH SERVICES THESE SCHOOL HOLIDAYS!

# OUTDOOR GAMES

WITH DJ, PRIZES AND VOUCHERS

**ONLY  
\$2 ENTRY**

**Monday 23 January, 11am-3pm  
TRAC, Thomastown**



BUILD YOUR CONFIDENCE, FEEL HEALTHIER AND A WHOLE LOT HAPPIER

# FUN FREE OUTDOOR FITNESS CAMPS

ON NOW

LENDLEASE AURORA SALES &  
INFORMATION CENTRE  
CNR GARRONG AVE & DOLLY WAY  
WOLLERT

NO JOINING FEE, NO CLASS FEE, IT'S ALL **FREE!**



Regular exercise and good nutrition  
can help build a happy life

CLASSES AT 7PM DAILY - EACH RUNS FOR 45MIN

Mon



X-TRAINING

Tue



BOXING

Wed



X-TRAINING

Thurs



BOXING

Fri



X-TRAINING

REGISTER TODAY TO BOOK YOUR SESSIONS

via [www.livelifeggetactive.com](http://www.livelifeggetactive.com)

OR SIMPLY SCAN THE CODE BELOW TO GET STARTED

PROUDLY SUPPORTED BY

AURORA<sup>®</sup>

 **lendlease** living



Scan Me



# COULD YOU FOSTER A CHILD?

We **URGENTLY** need **Foster Carers**  
**in your area.** Enquire now on how  
you can help change a child's life.

**CanFoster.com.au | 1800 932 273**

PEOPLE OUTDOORS

# CAMPS FOR PEOPLE LIVING WITH DISABILITY

## Adventure for All!

- Overnight Camps
- Weekend Camps
- School Holiday Camps

All meals, activities, transport and accommodation included. Central pick up point.

We are a Registered NDIS Service Provider. NDIS plan not required to attend.

Kids, teens and adults welcome.

Campers supported by professional staff.

30 years experience!

**Call today to find out more:**  
**Melbourne - 03 9863 6824**  
**Ballarat - 0455 514 879**



[www.peopleoutdoors.org.au](http://www.peopleoutdoors.org.au)







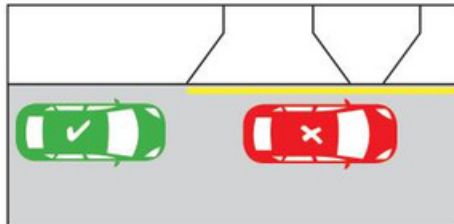
# PARKING AND SAFETY AROUND SCHOOLS

## Speed



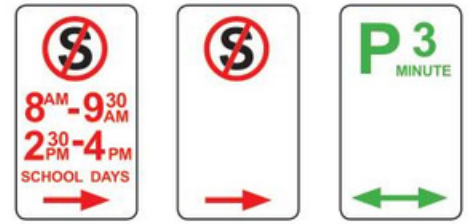
Look out for the reduced speed limit around schools and slow down to improve safety.

## Yellow edge line



A driver must not stop on the side of a road marked with a yellow edge line.

## Parking/Stopping signage



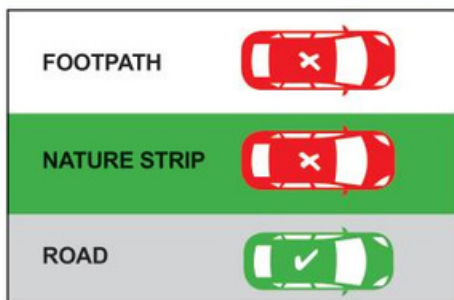
No stopping areas must be kept clear. If times/days are specified, restrictions are only applicable to the specified times/days. You cannot park in a P3 minute area for longer than three minutes.

## School crossings



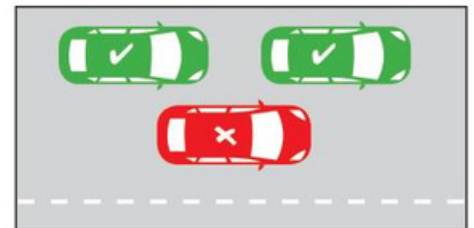
- Look out for flags and Crossing Supervisors
- You must stop for anyone waiting to cross, or who has started crossing
- Please remain stopped until the crossing is clear.

## No parking on nature strips/footpaths



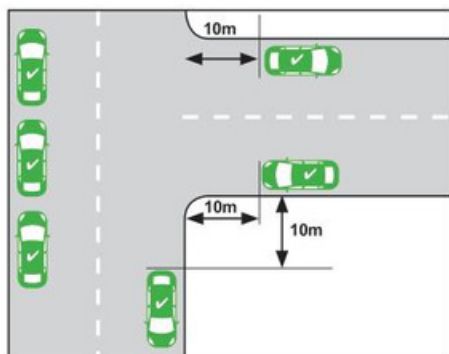
Parking is illegal on nature strips and footpaths.

## Double parking



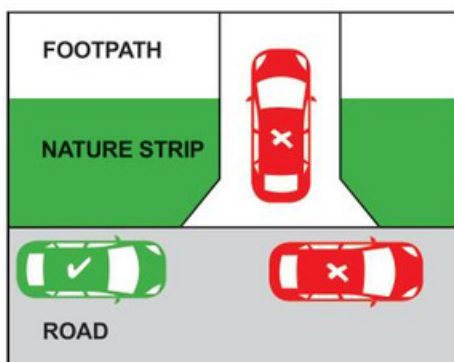
It is illegal to double park at any time. This affects the flow of traffic.

## Within 10 metres of an intersection



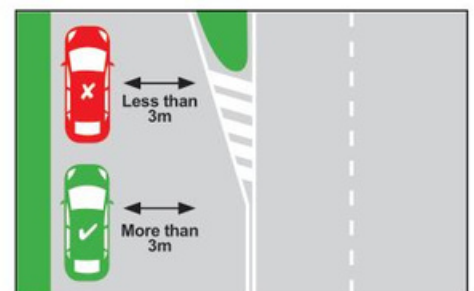
A driver must not stop with any part of their vehicle within 10 metres of an intersection unless signed otherwise.

## Stopping across driveways



It is illegal to, stop/park across a driveway unless you stay in the car and are there for no more than two minutes and move immediately if required to do so to allow entry or exit by the owner/occupier.

## 3 metre gap for signage



At least 3 metres must be left between your vehicle and the centre dividing line to allow other vehicles to pass safely and not obstruct traffic.

## What can you do to stay safe

- Supervise your children in or near traffic
- Walk or cycle to school with your child
- Respect all road rules, parking signs and instructions from authorities
- Wait on the same side of the street as your child
- Always let your child out of the kerb side of the car.

## Free Telephone Interpreter Service

العربية	9679 9871	Italiano	9679 9874
Ελληνικά	9679 9873	Македонски	9679 9875
हिंदी	9679 9879	简体中文	9679 9857

ਪੰਜਾਬੀ	9679 9879	Tiếng Việt	9679 9878
தமிழ்	9679 9879	Other	9679 9879
Türkçe	9679 9877		

# School Crossing Supervisor positions now available.

## Enjoy the benefits of permanent part-time work!

There are so many great reasons to join the City of Whittlesea team as a Crossing Supervisor:

- Starting hourly rate of \$31.96 (work 40 weeks but be paid for 52 weeks a year)
- Work 15 hours per fortnight during school terms (Annualised salary paid 12.6hrs per fortnight)
- Paid public holidays that fall during school terms
- 10.5% superannuation and pro-rata sick leave
- Receive on-the-job training and uniform is provided
- Reduced price memberships available at Mill Park Leisure and Thomastown Recreation & Aquatic Centre
- Join the City of Whittlesea's active social club and attend organised events
- Health & Wellbeing Programs available

**Apply now!**

### TO APPLY

Complete the application form on the reverse side of this flyer or online at [www.whittlesea.vic.gov.au/schoolcrossings](http://www.whittlesea.vic.gov.au/schoolcrossings)

For further information please contact the School Crossing Team on 9217 2508 or email [school.crossing@whittlesea.vic.gov.au](mailto:school.crossing@whittlesea.vic.gov.au)



**City of  
Whittlesea**

# Apply to become a School Crossing Supervisor

Join the City of Whittlesea and make a difference in our community!

This very rewarding role helps the most vulnerable members of the community, our children. Assist school aged children and other pedestrians to cross the road at designated school crossings.

## ABOUT YOU

To be considered for this job you need to:

- be medically fit
- have your own transport
- be of good character
- relate well to children and be able to talk to children's parents and teachers
- be available to work for 1.5 hours per day, generally between 8am-9am and 3pm-4pm on weekdays during school terms
- be able to obtain and retain a Working with Children Check (WWCC)
- be fully vaccinated against COVID-19

**If this sounds like you, then you should definitely apply! Complete the application form below or online at [www.whittlesea.vic.gov.au/schoolcrossings](http://www.whittlesea.vic.gov.au/schoolcrossings)**



Please send your completed form to: City of Whittlesea, Locked Bag 1, Bundoora MDC VIC 3083

**Name:** \_\_\_\_\_

**Address:** \_\_\_\_\_

**Phone:** \_\_\_\_\_ **Mobile:** \_\_\_\_\_

**Email address:** \_\_\_\_\_

**Do you have any experience working with children?** If yes, please provide details:

\_\_\_\_\_  
\_\_\_\_\_

**Why do you want to work as a school crossing supervisor?**

\_\_\_\_\_  
\_\_\_\_\_

**What do you know about being a school crossing supervisor?**

\_\_\_\_\_  
\_\_\_\_\_

**Referees:** Please provide the names and phone numbers of two (2) referees (cannot be family or friends). Please state briefly, the relationship with each referee (for example, your last employer, a supervisor, involvement in a community group, voluntary work, etc).

**Name:** \_\_\_\_\_ **Name:** \_\_\_\_\_

**Phone:** \_\_\_\_\_ **Phone:** \_\_\_\_\_

**Relationship:** \_\_\_\_\_ **Relationship:** \_\_\_\_\_